

Sendai Mediatheque



Patrick Hurst
Nnaemeka Mozie
Domingo Sanchez
Jose Terrazas
Matt Weigers

Arch 631 – Fall 2010

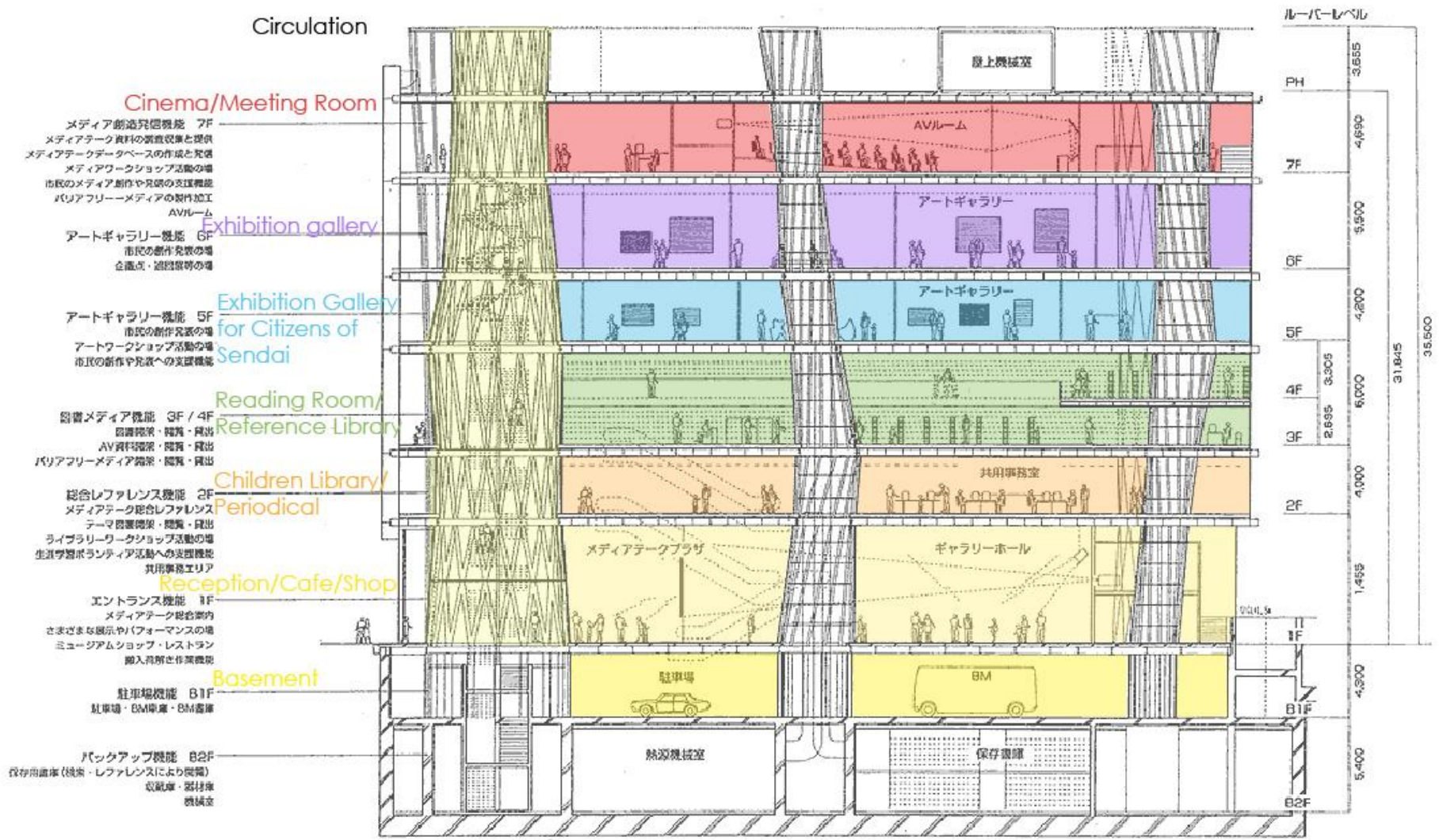
Sendai Mediatheque



Sendai, Japan
Designed By Toyo Ito

2001

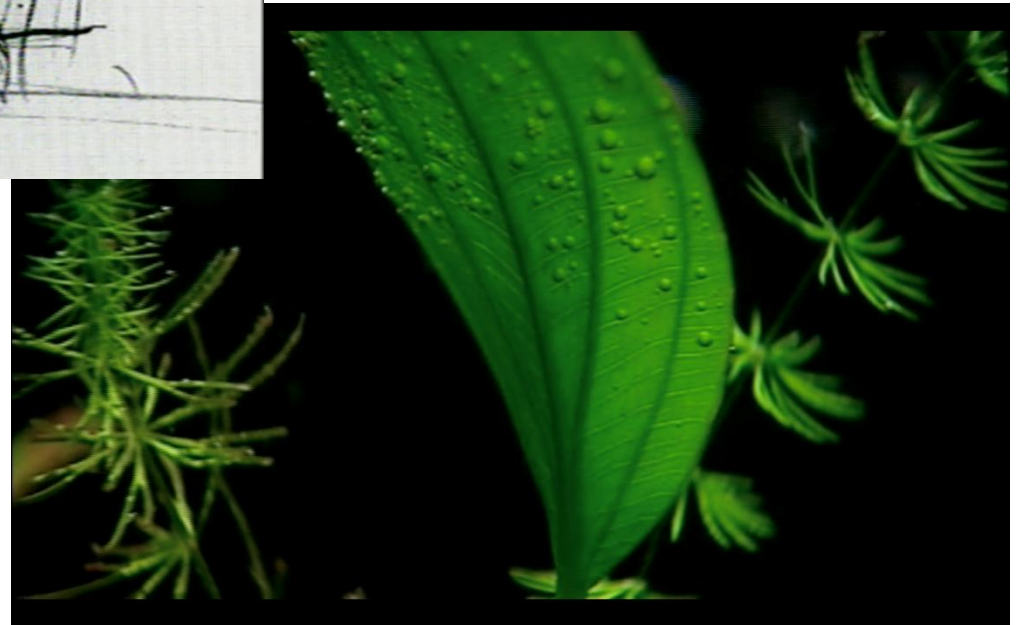
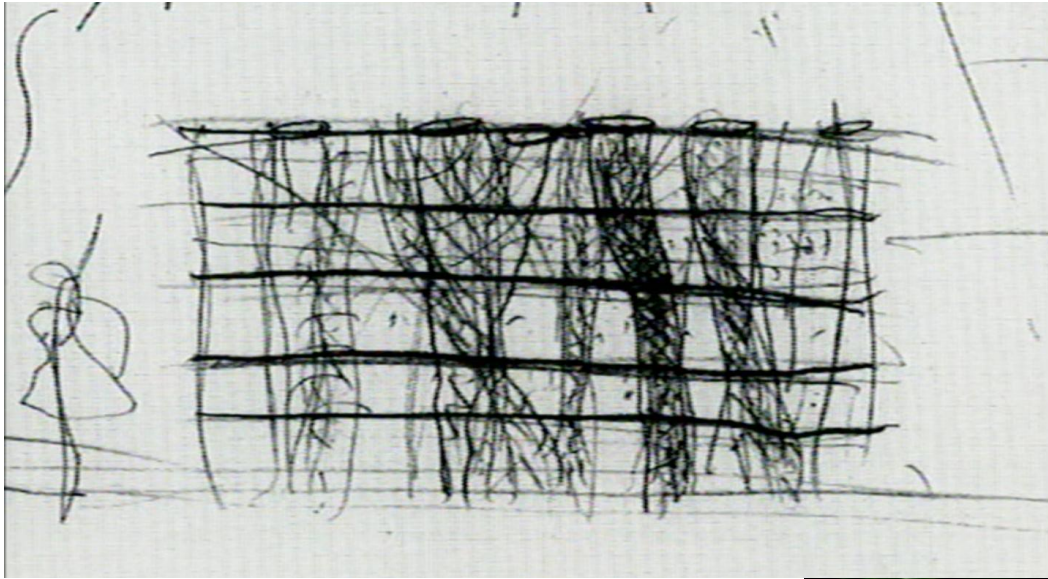
Program

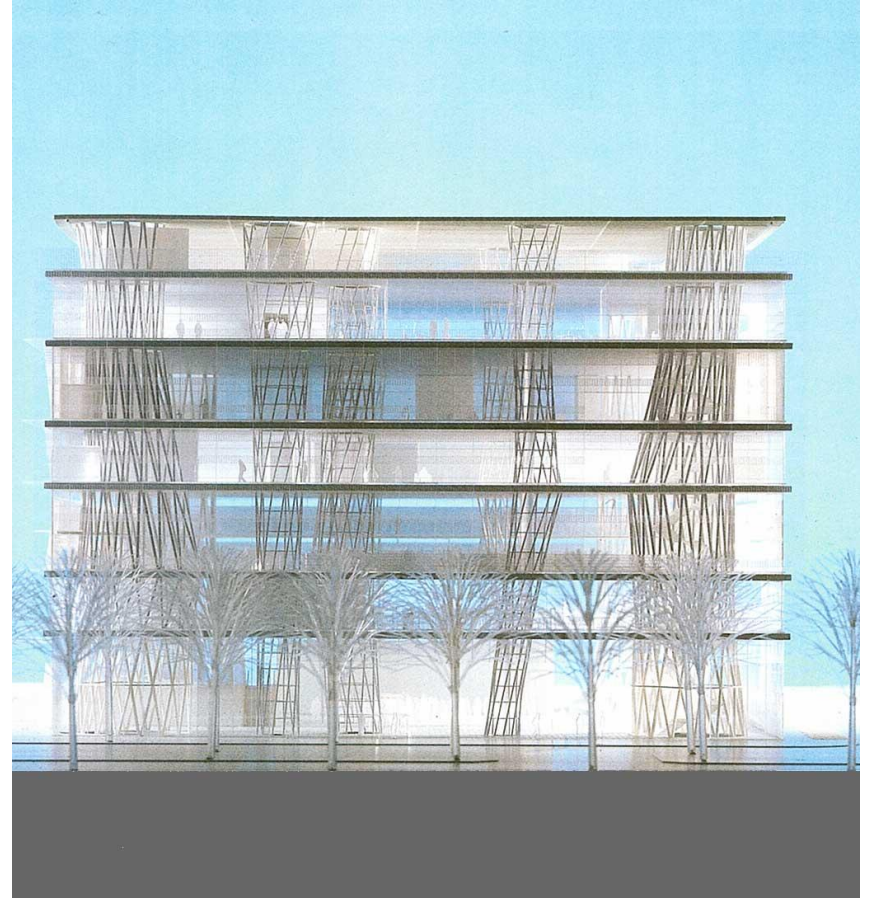
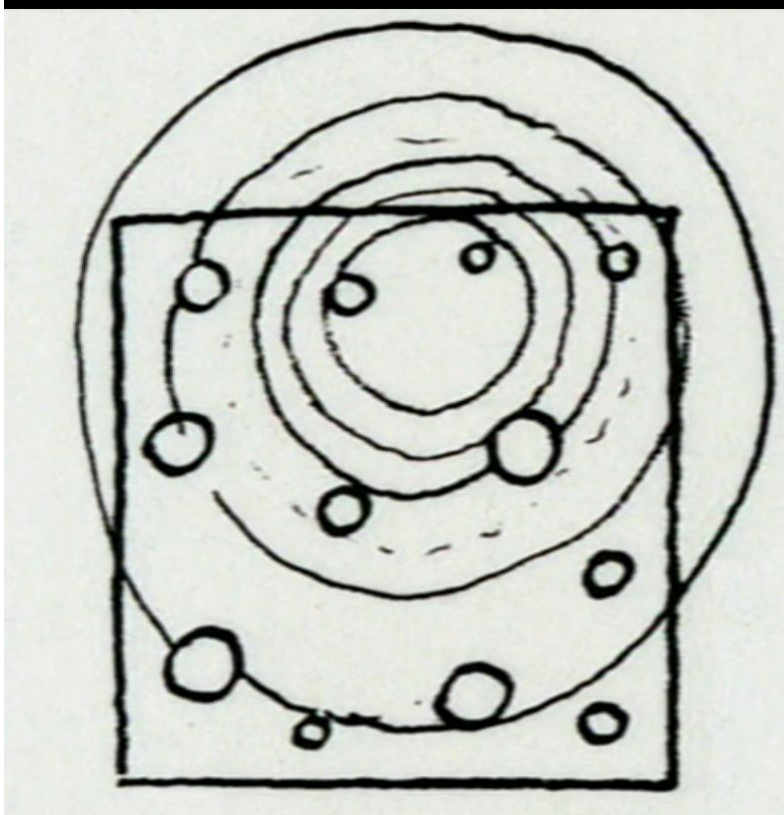


断面図

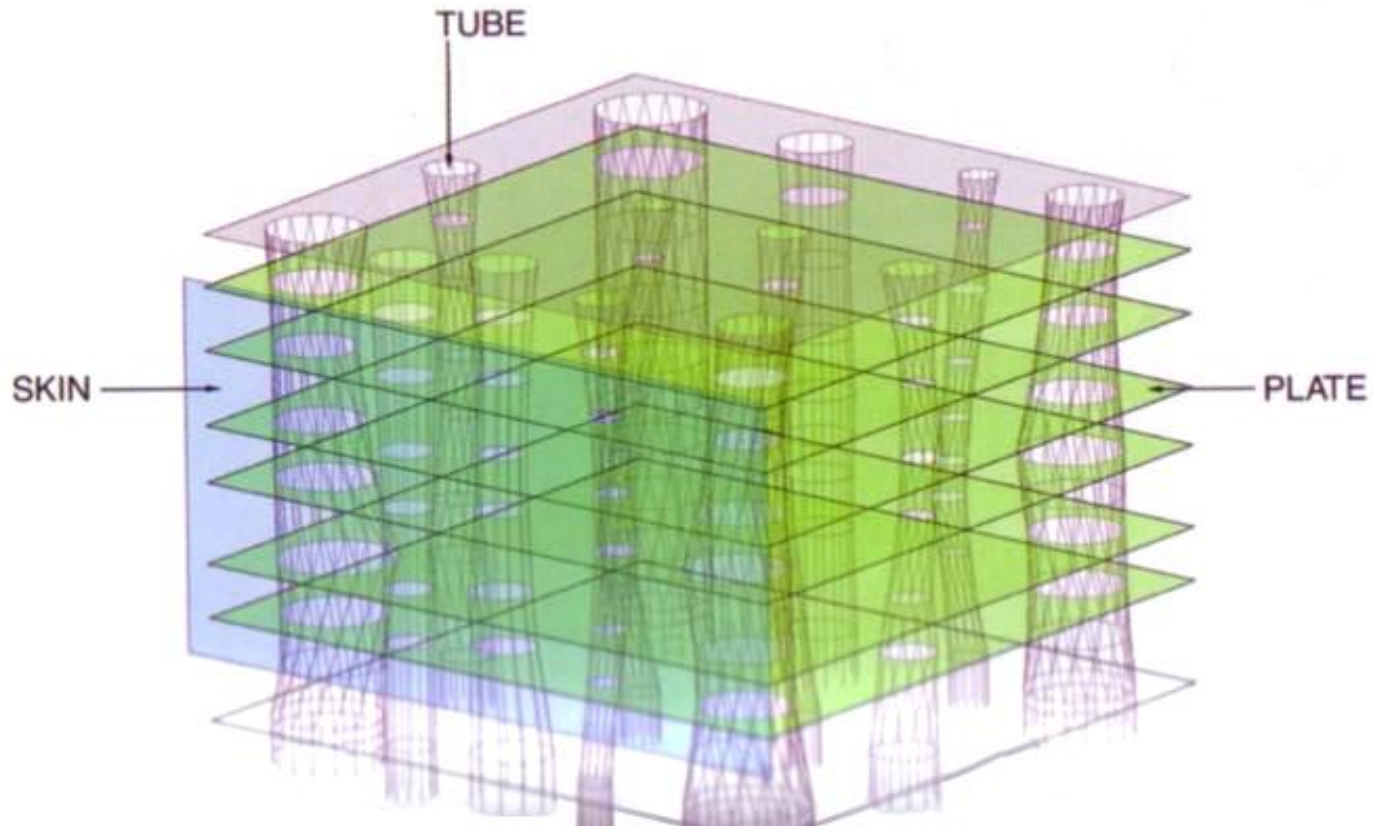
Structural Concept

The Media Library is based on the concept of seaweed floating in an aquarium

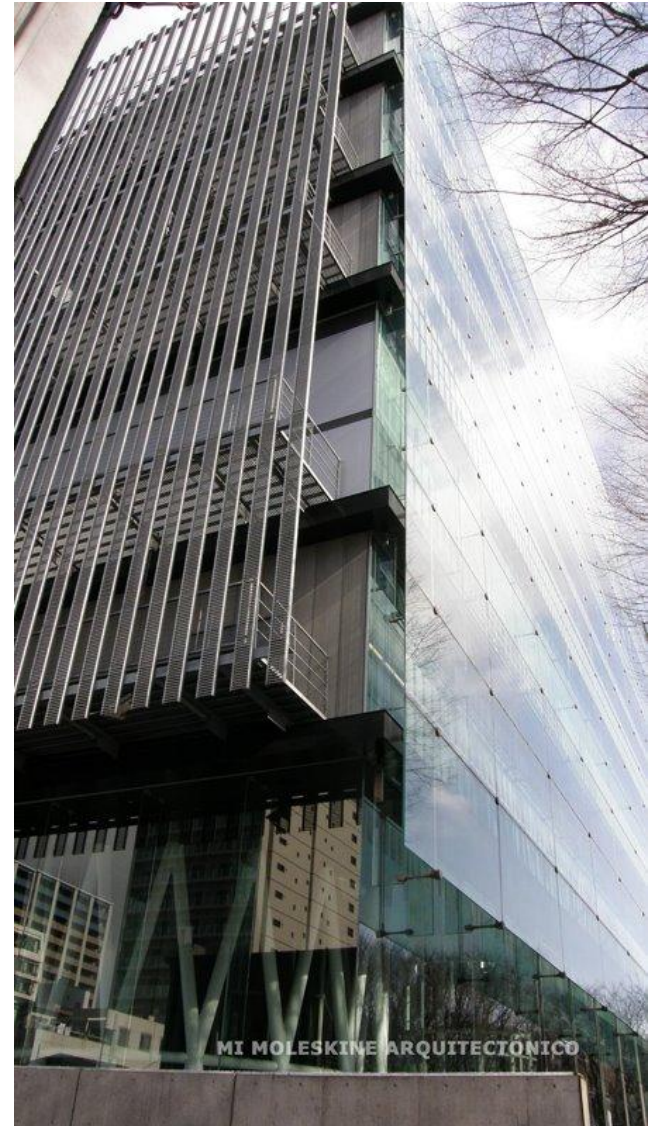




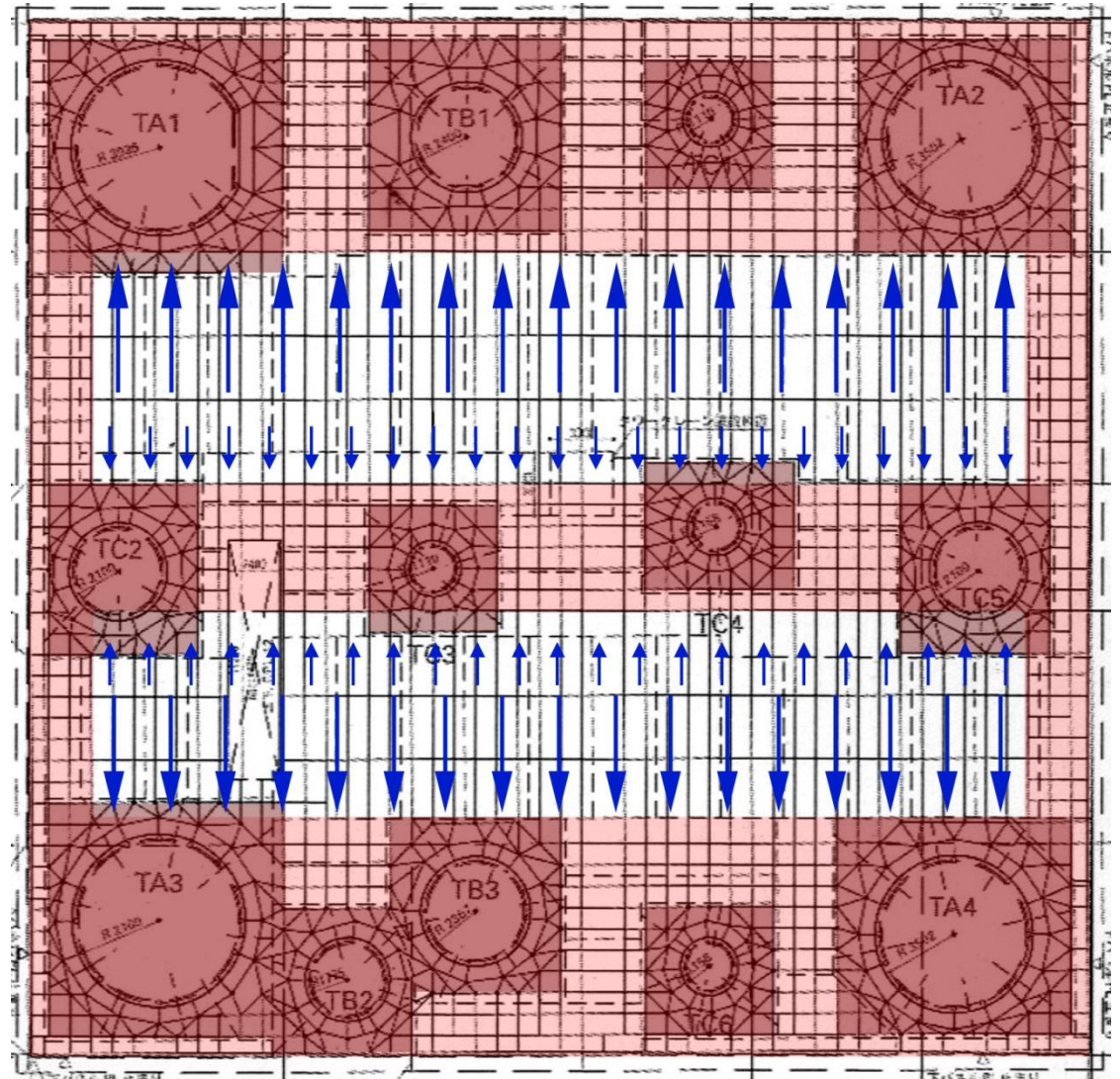
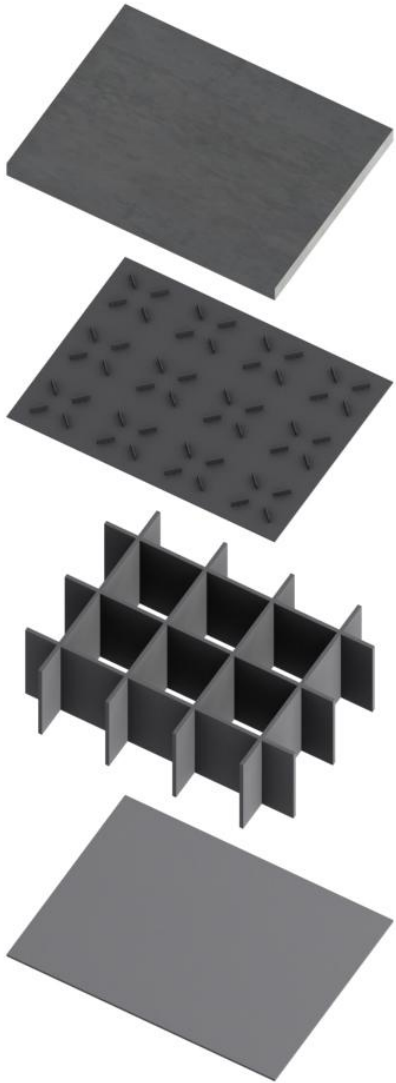
Three Major Elements



Skin



Plates



Reinforced Connection Ring

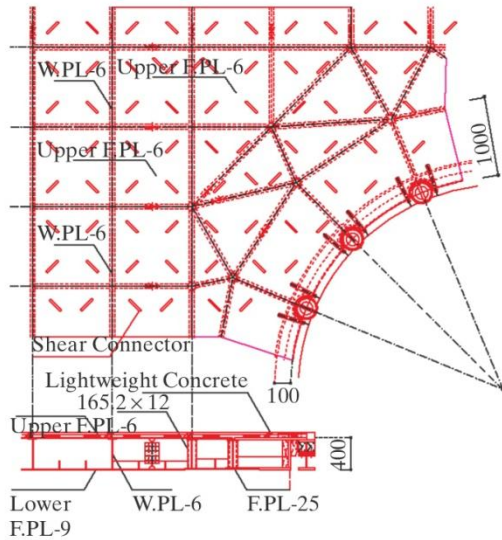
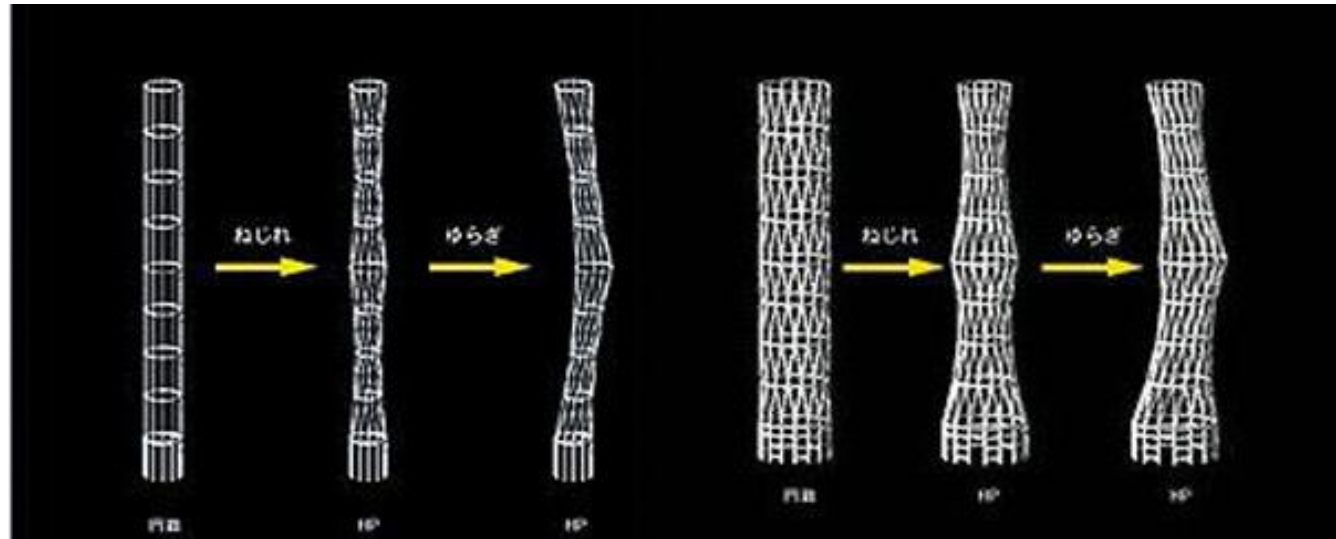
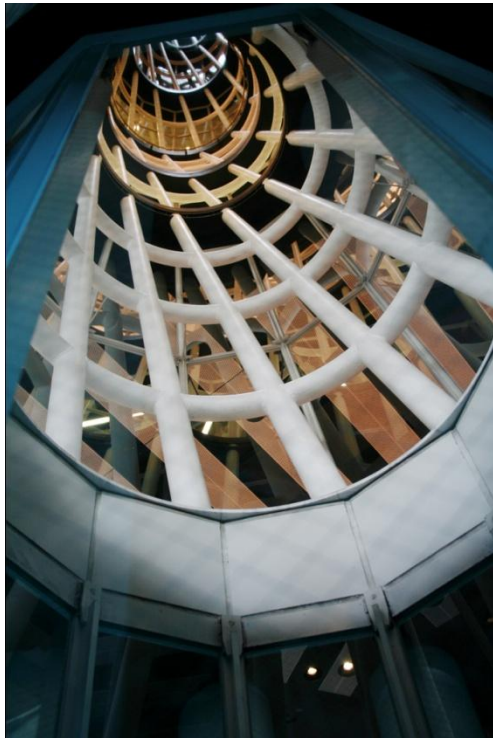
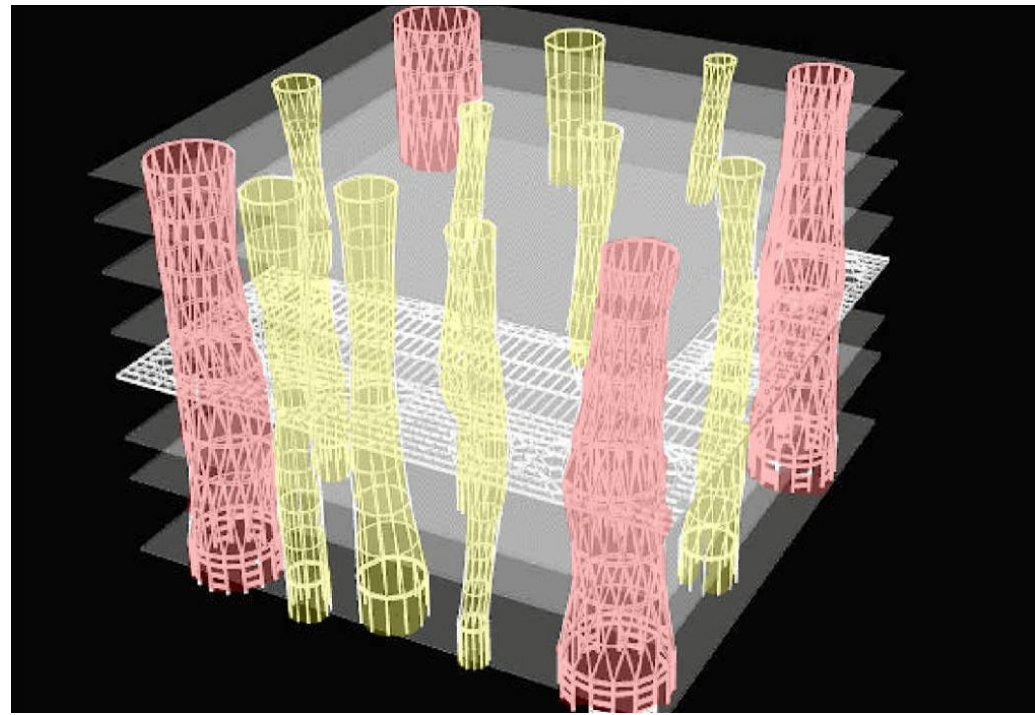
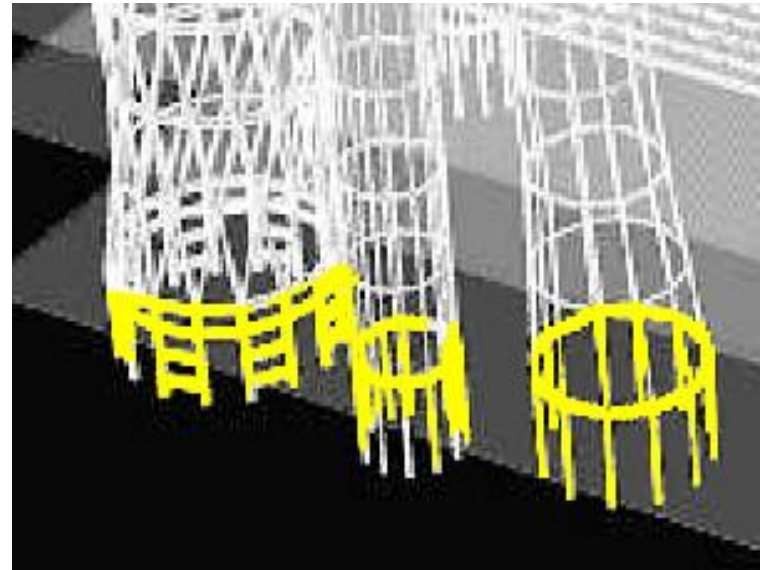
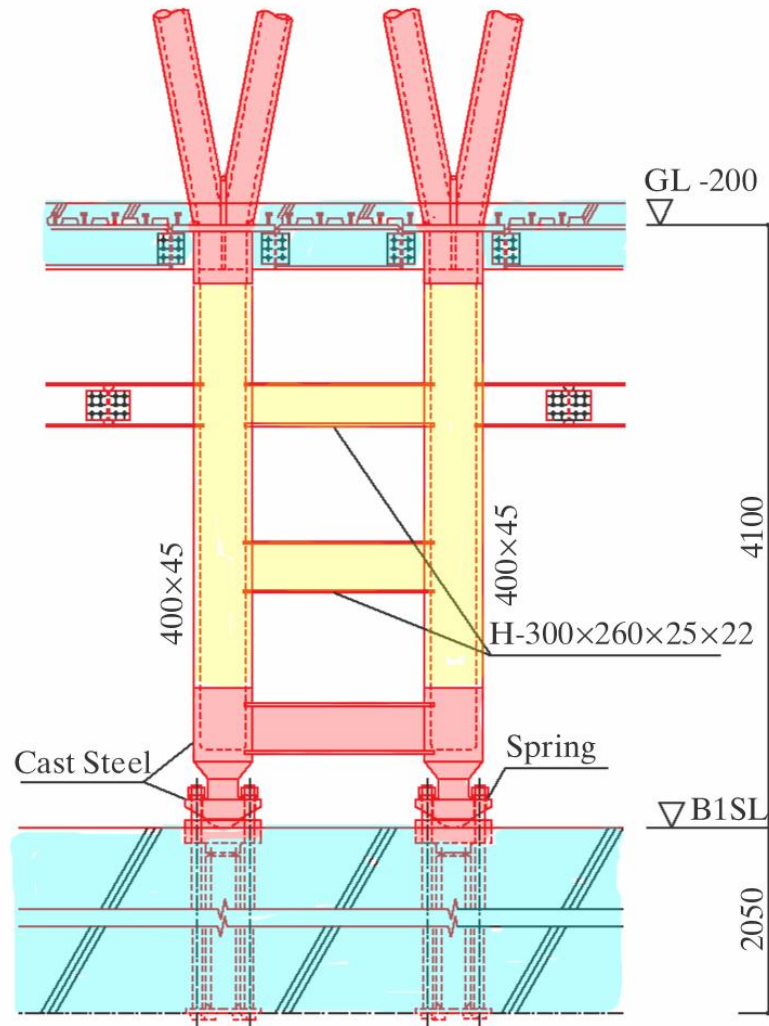


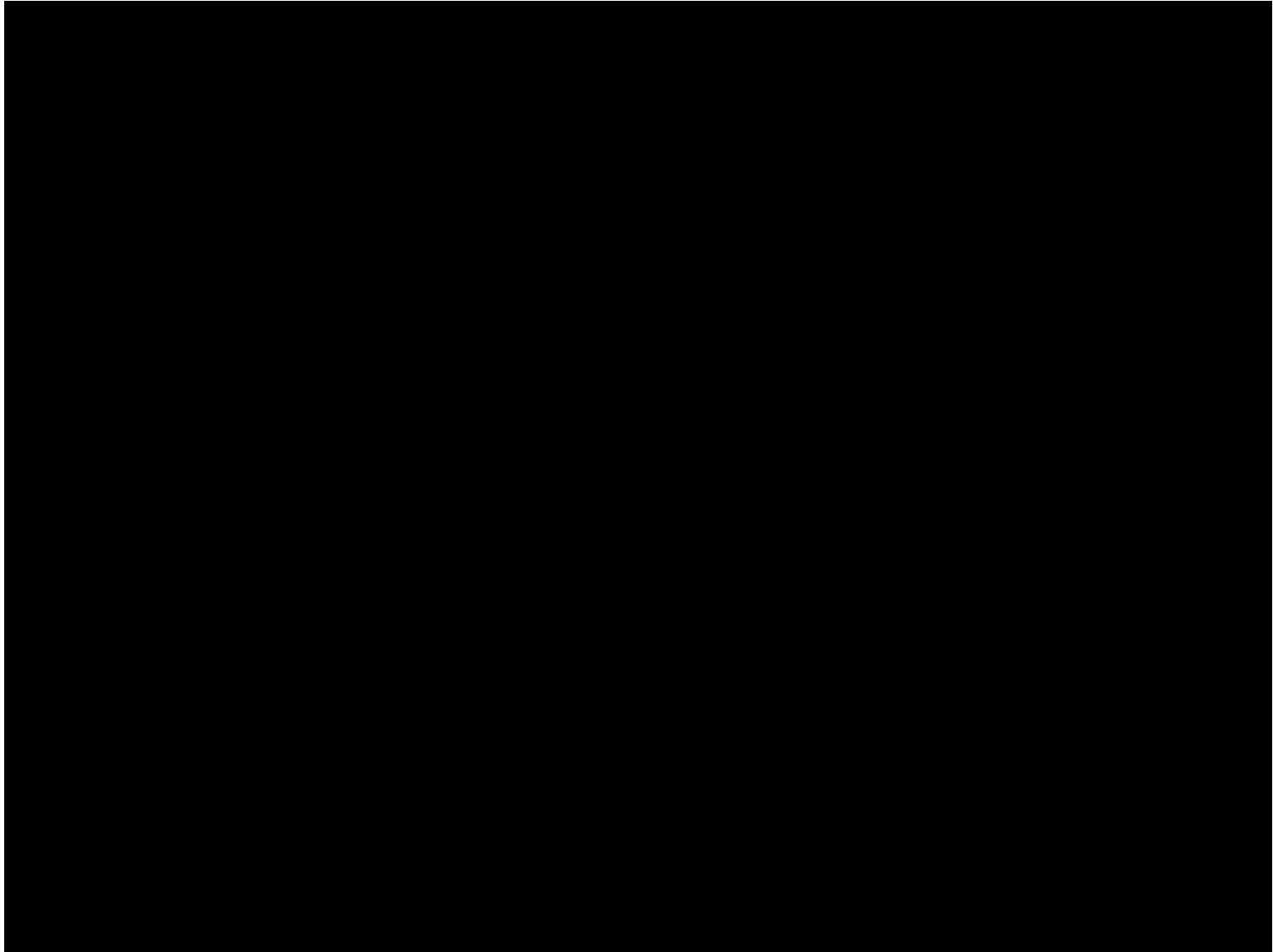
Fig. 5: Sandwiched steel plates

Tubes

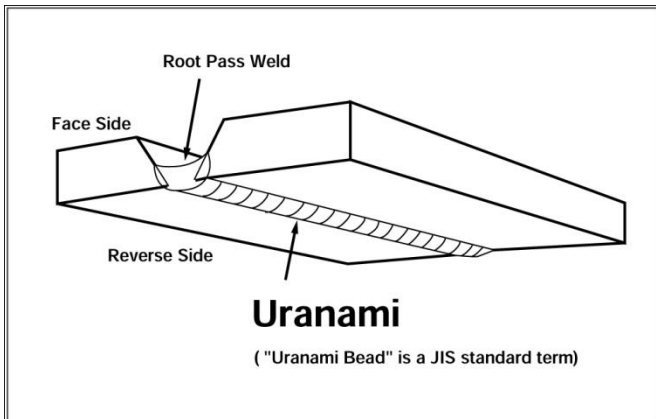


Seismic Design

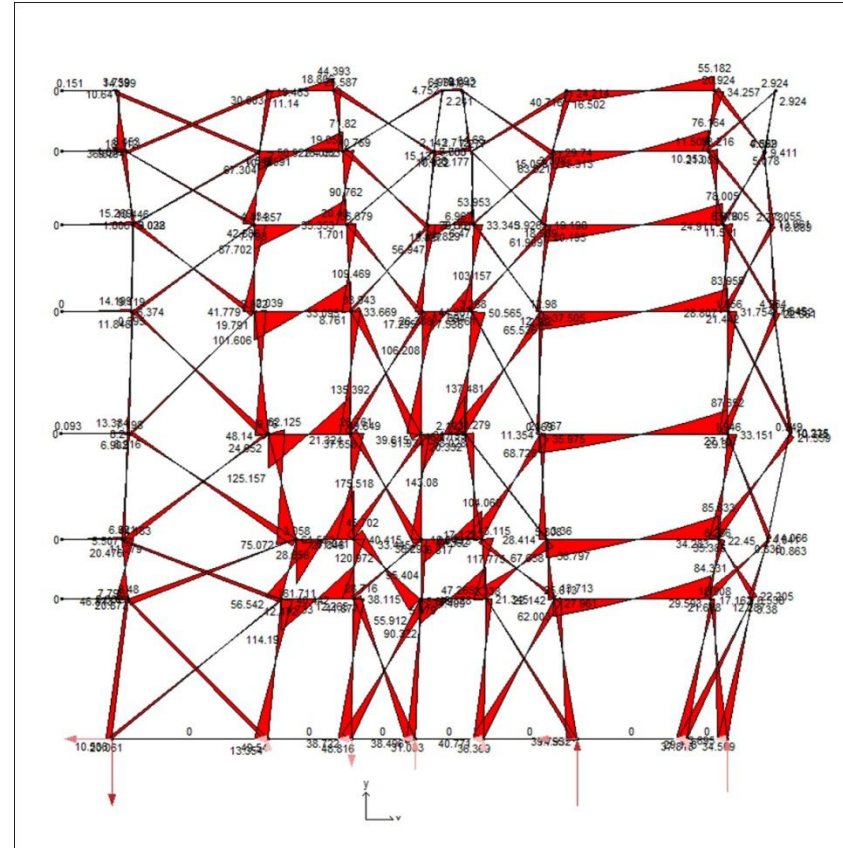
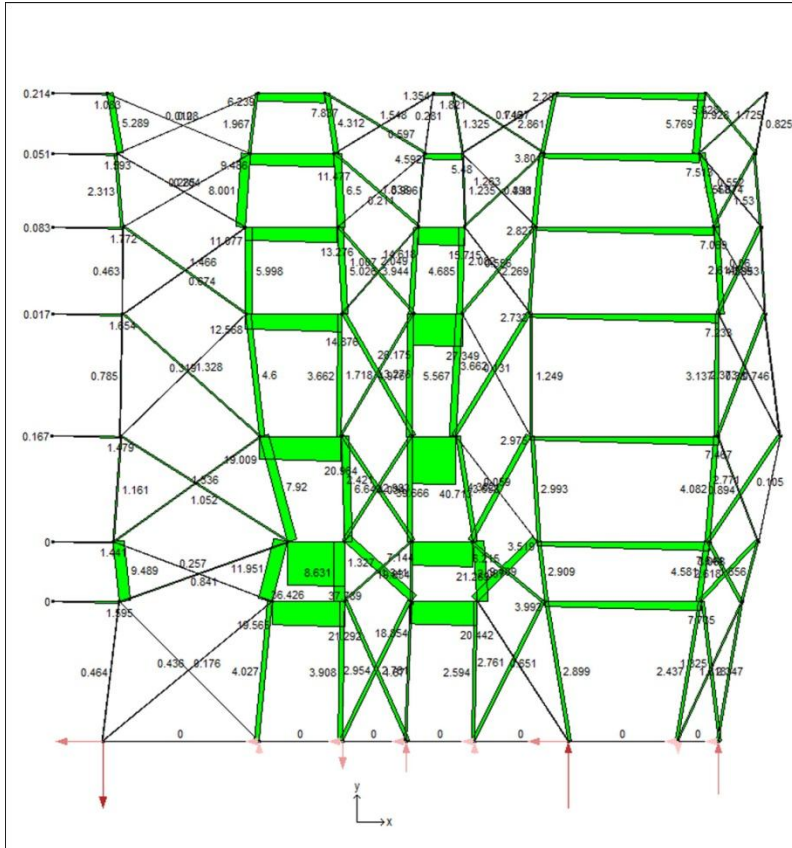




Construction Issues



Wind Loads





Toyo Ito