



library at  
phillips exeter academy  
louis kahn  
exeter, new hampshire

## contents

- architect background
- project background
- structural systems composition,  
analysis
- conclusion
- references



## louis kahn

-born in Estonia in 1901

-attended University of Penn on scholarship, graduated with his Bachelor of Architecture in 1924

-In 1951 Kahn received a commission to design the Yale University Art Gallery in New Haven, Connecticut- first major architectural project

-notable works include: Kimball Art Museum, Salk Institute for Biological Studies, National Capital- Bangladesh

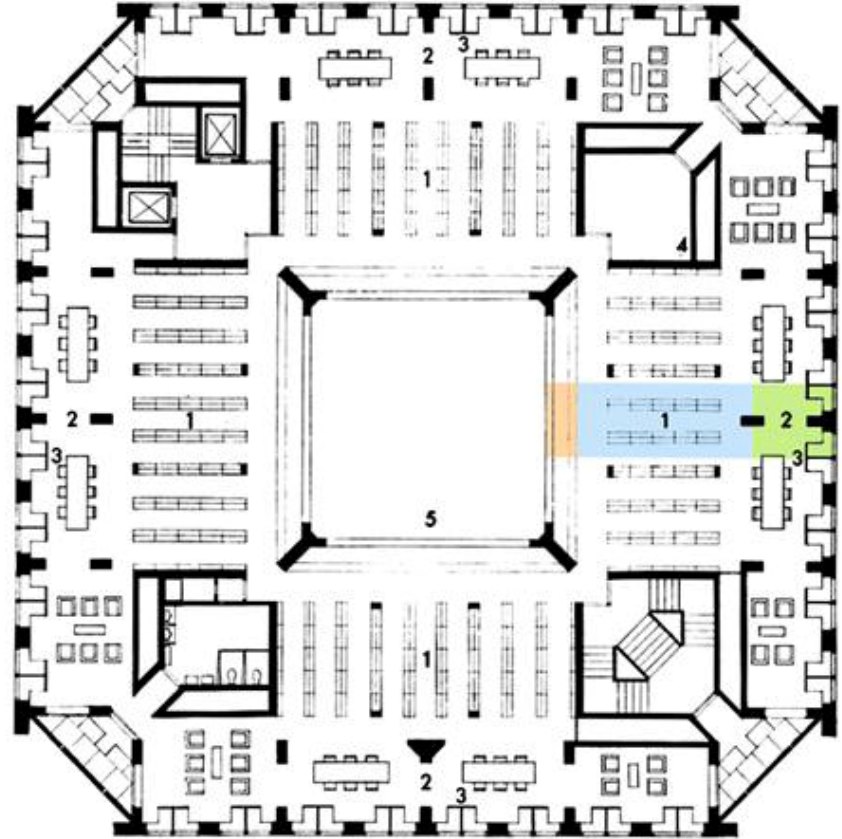
# Phillips Exeter Academy Library

- completed in 1971, prep school in Exeter, New Hampshire
- adjacent to several traditional structures on campus-hence the brick selection
- original program to include 250,000 books along with seminar rooms and study space for up to 400 students



## structural composition

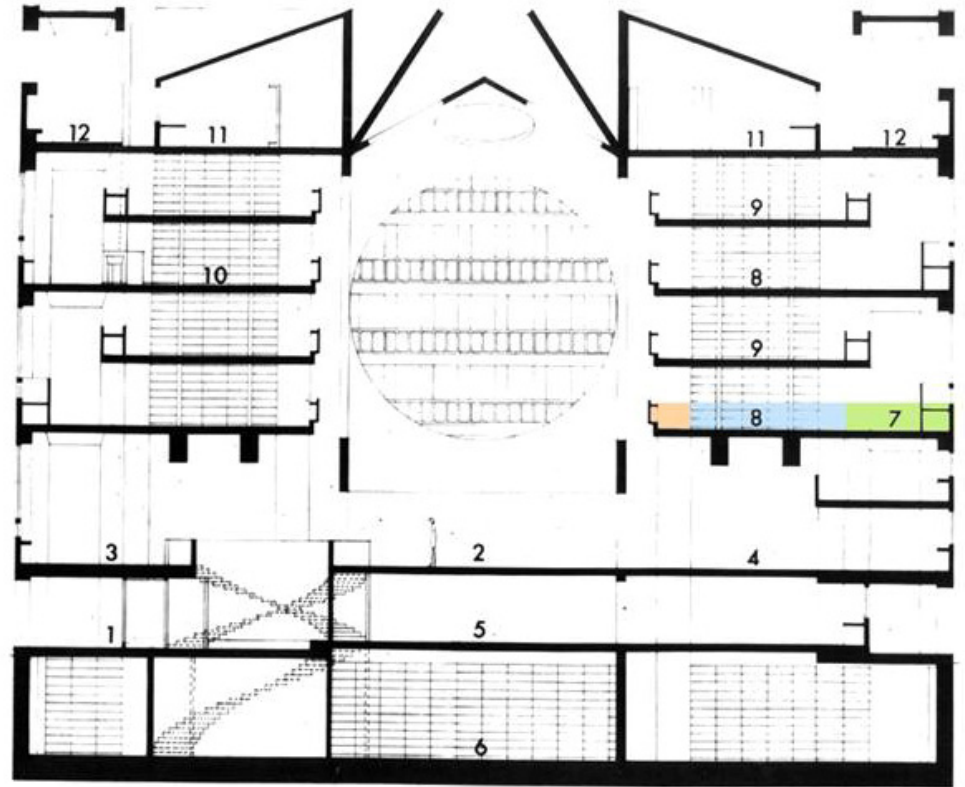
- square plan with three zones: outer brick zone, adjacent concrete zone, and interior entrance hall atrium
- brick zone serves as place for patrons to relax & read
- concrete zone stores the books
- atrium is “invitation to books



## structural composition

-outer zone or “brick donut” is load bearing masonry

-inner zone is reinforced concrete, or “concrete donut”



# structural composition

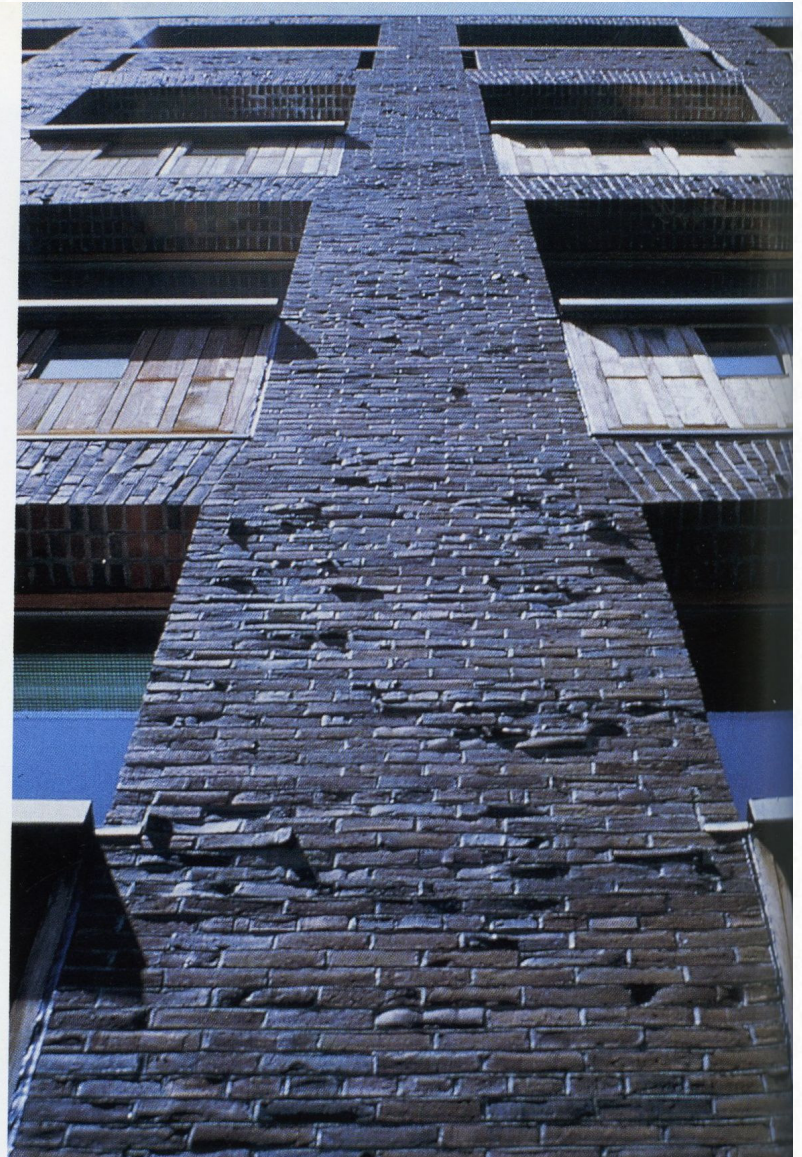


# structural composition

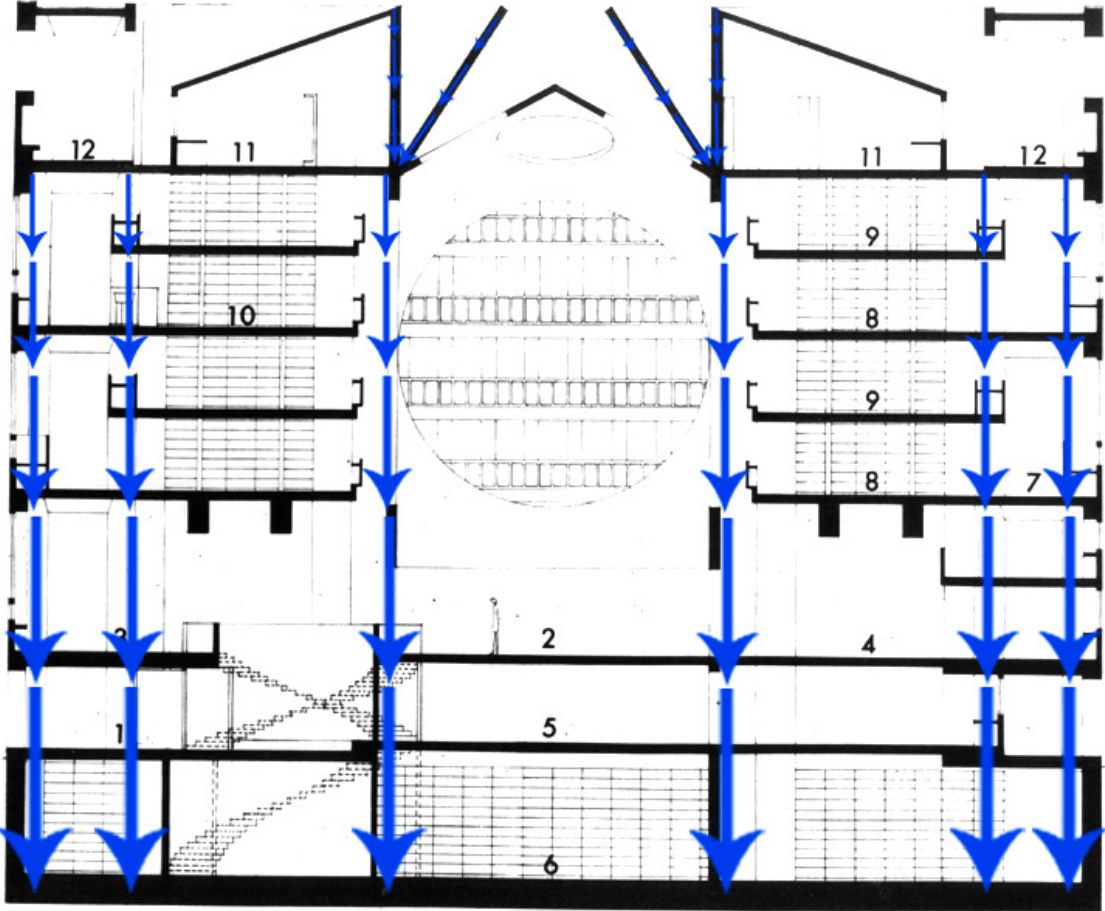




# structural composition



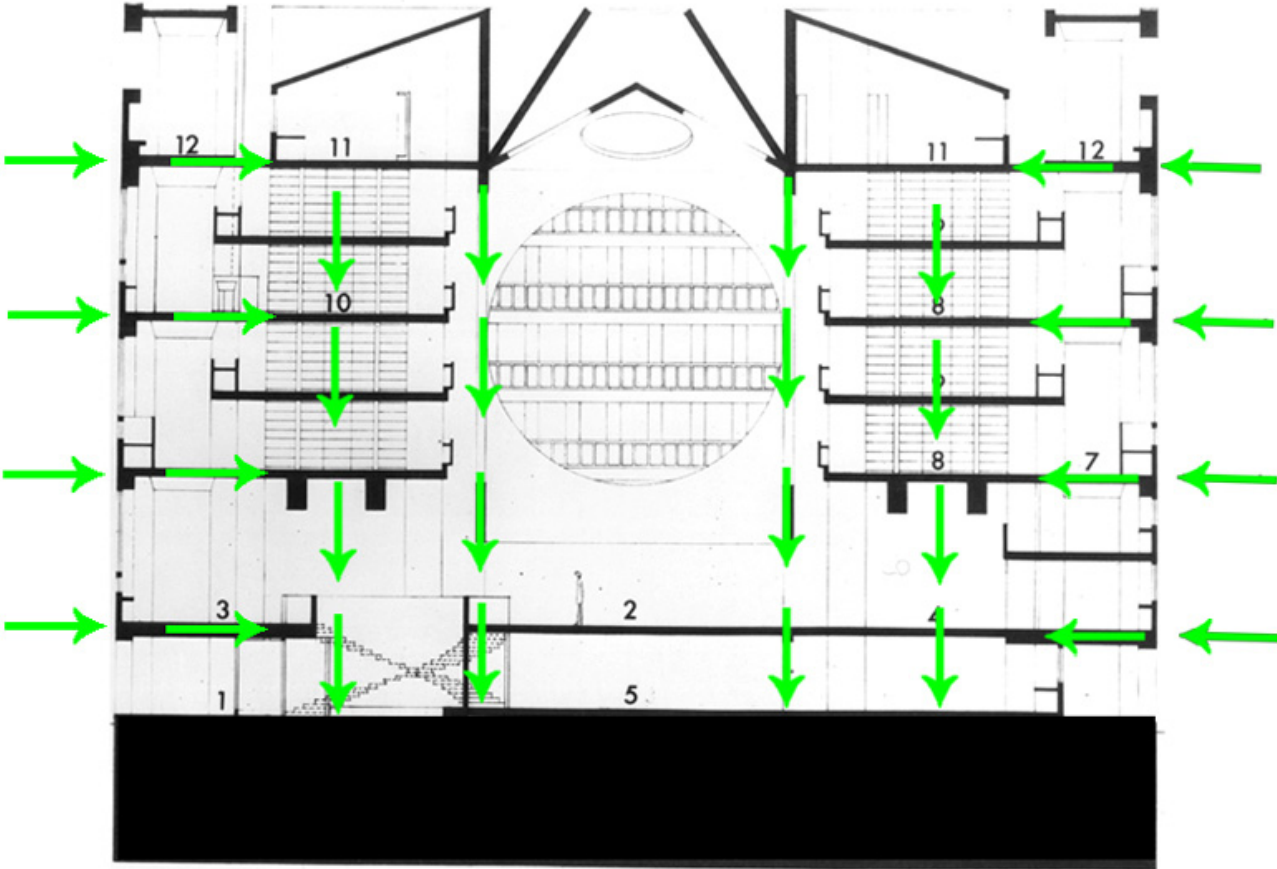
# structural composition



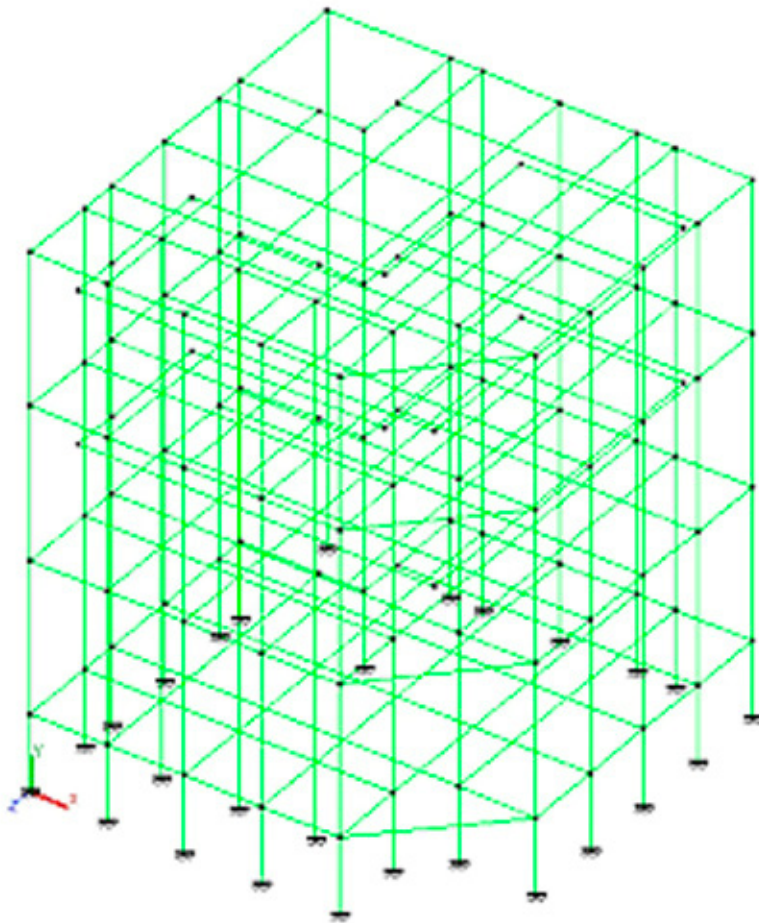
### Cross-Section

- 1 Entrance
- 2 Central space
- 3 Current periodical
- 4 Card catalogue
- 5 Periodical back numbers
- 6 Periodical back numbers
- 7
- 8
- 9 Mezzanine stack area
- 10 Fiction area
- 11 Rare book and Seminar room
- 12 Roof garden

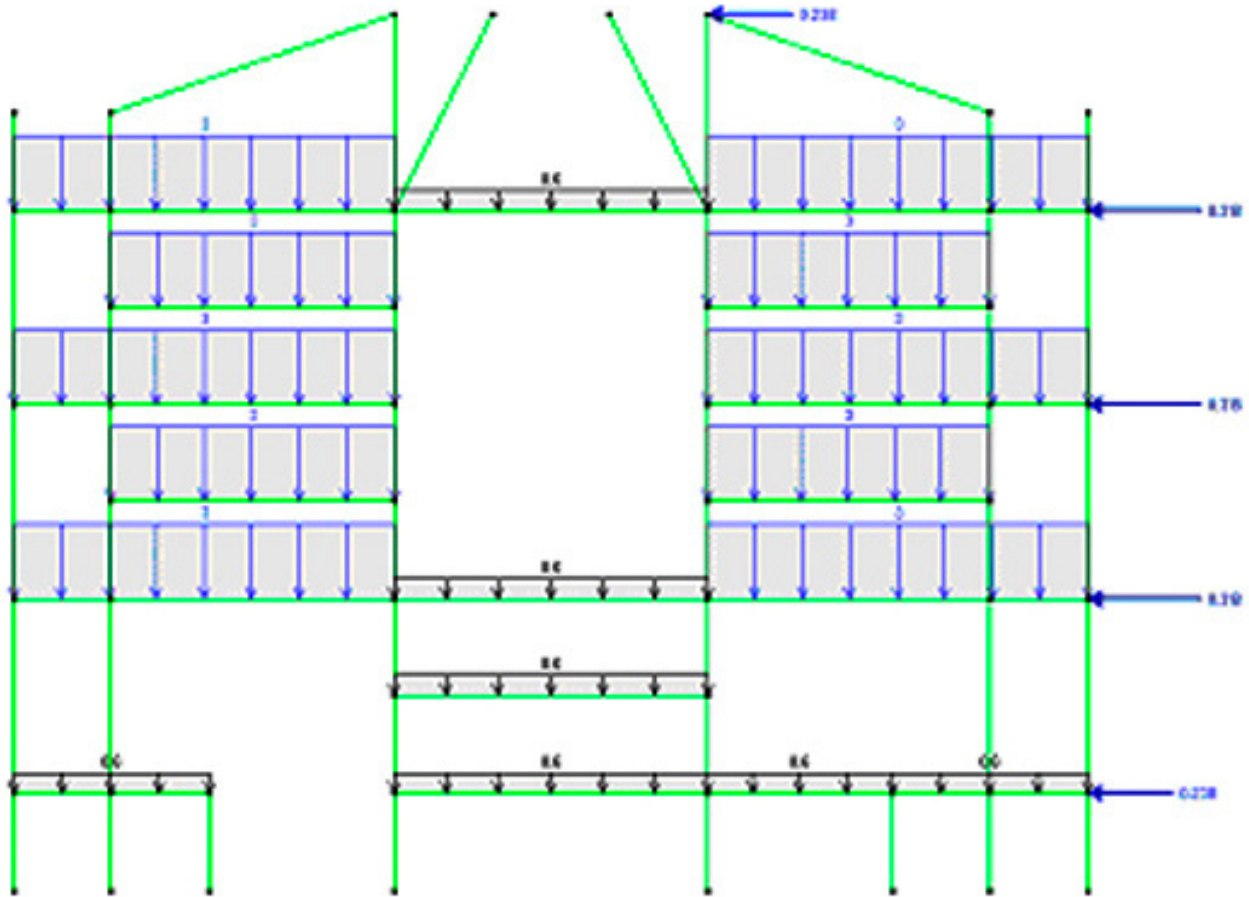
lateral loads



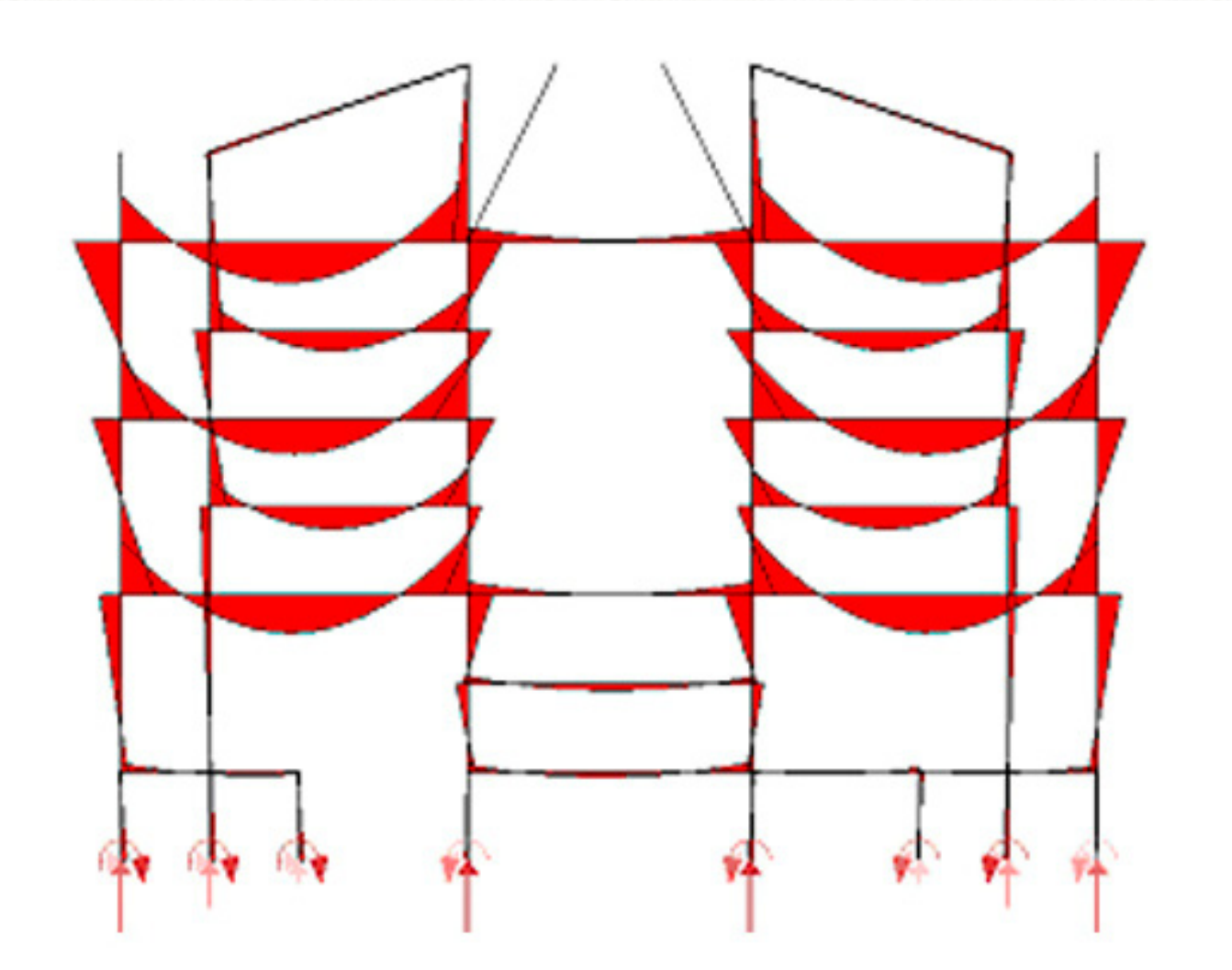
# Multiframe analysis



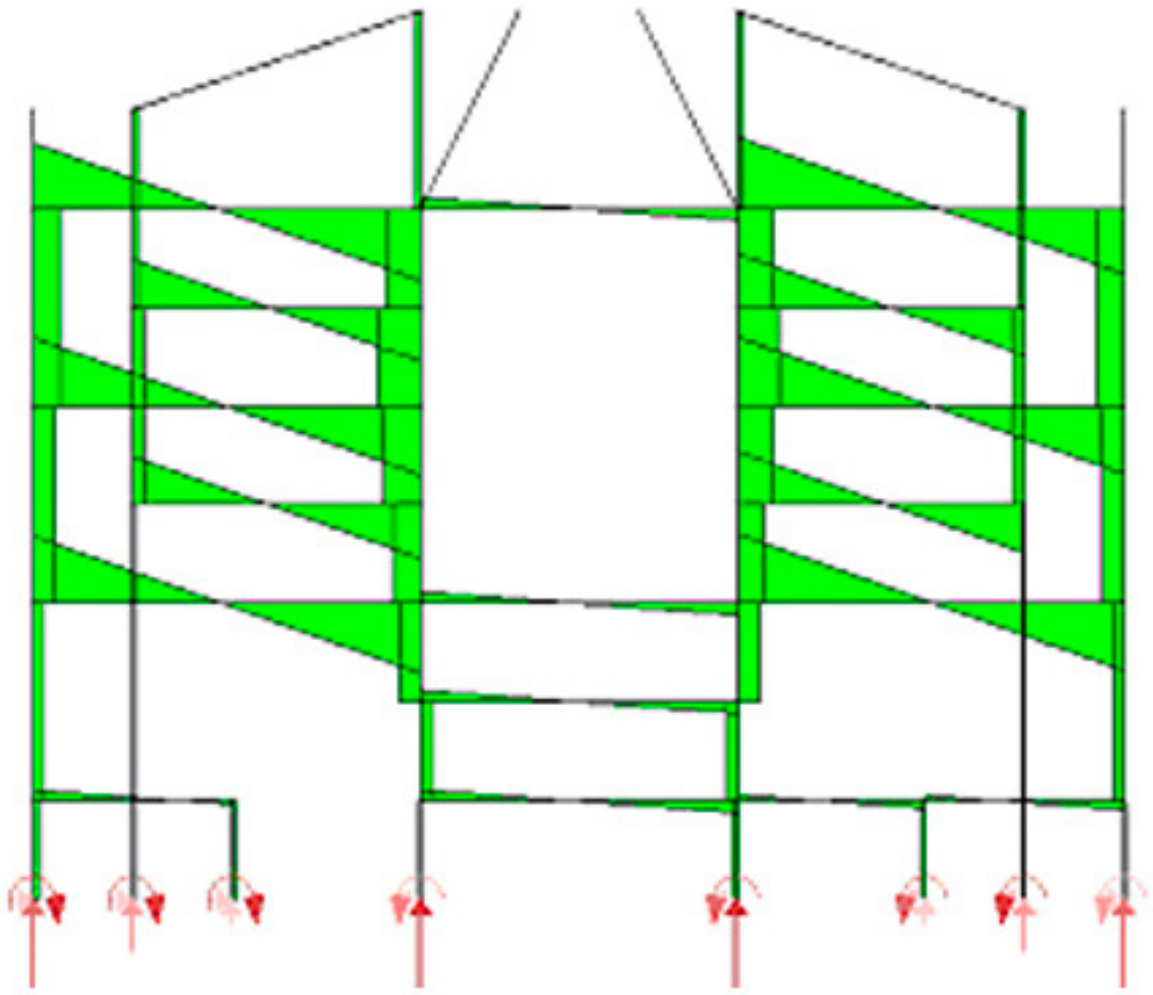
# Multiframe analysis



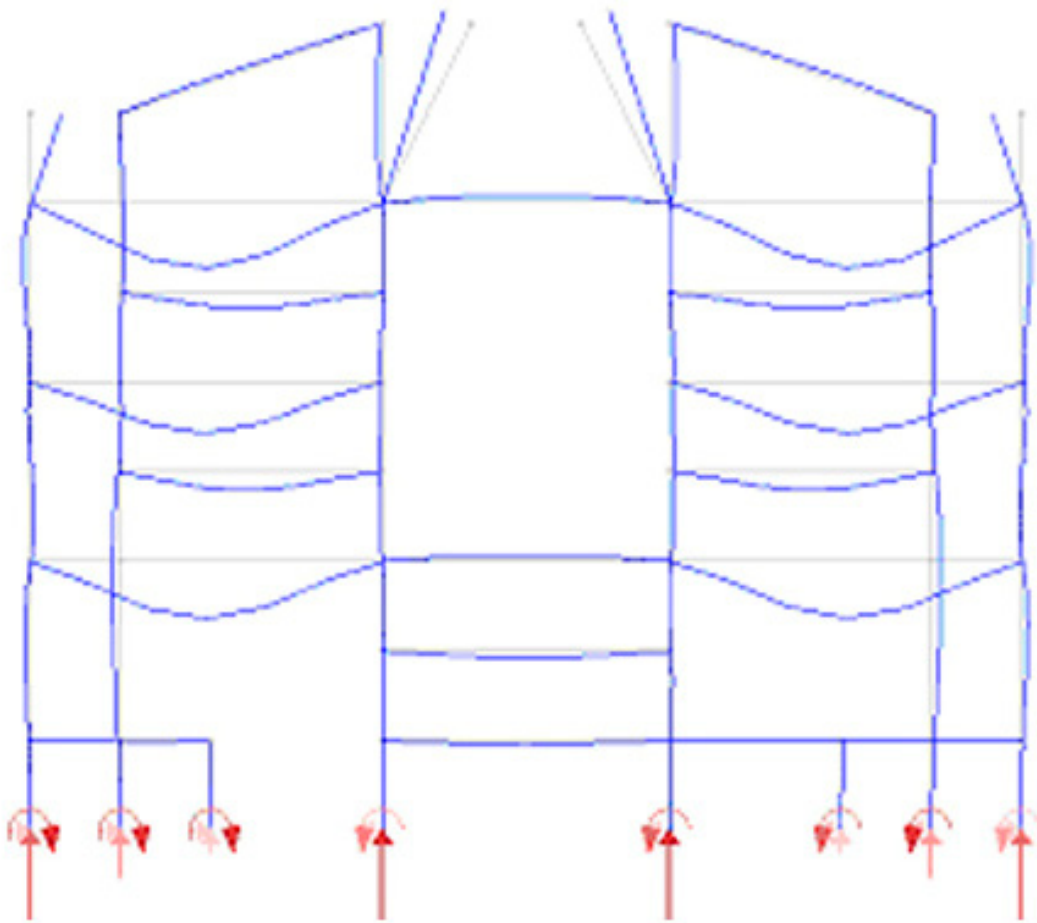
# Multiframe analysis



# Multiframe analysis

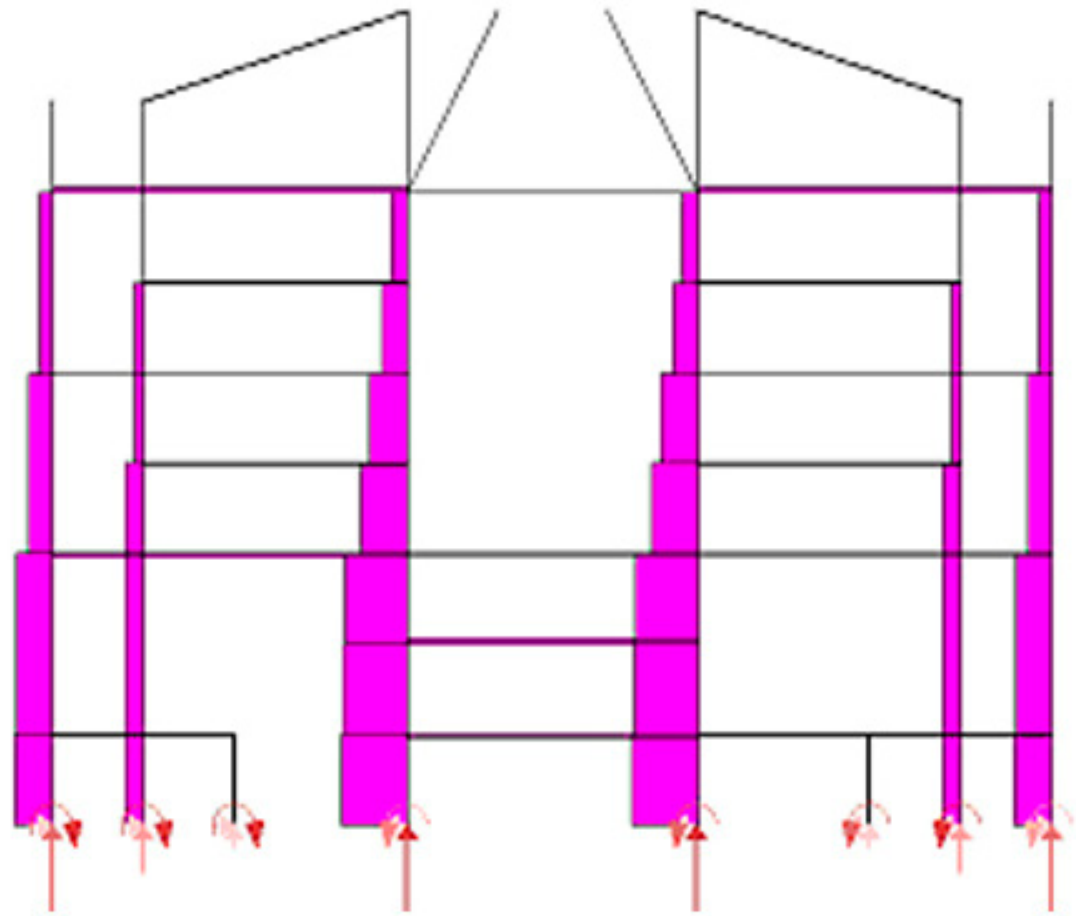


# Multiframe analysis





# Multiframe analysis



## conclusion

-Kahn's notion that, "Any sound building must be rooted in its materiality and be proudly true to the way it is made."

-"And Brick says to you, I like an arch"

-Using materials as they want to be used given their inherent qualities (brick, concrete, stone and wood)

-Structure's importance to the design and its role in the appeal of work despite its simple form



# bibliography

Architectural Archives of the University of Pennsylvania. 22 Nov. 2008

[www.design.upenn.edu/archives/majorcollections/kahn/exeter1.gif](http://www.design.upenn.edu/archives/majorcollections/kahn/exeter1.gif)

Gast, Klaus-Peter. Louis I. Kahn: Complete Works. Deutsche Verlags-Anstalt GmbH: Stuttgart, Germany, 2001.

Leventhal, Ross, and Ray Strang. Exeter Library Case Study. 8 Nov. 2008.

[www.uoregon.edu/~struct/resources/case\\_studies/case\\_studies\\_mass/kahn\\_exeter/kahn\\_exeter.html](http://www.uoregon.edu/~struct/resources/case_studies/case_studies_mass/kahn_exeter/kahn_exeter.html)

Metal Building Systems Manual. "Climatologic Data by County" 19 Nov. 2008

[www.chiefbuildings.com/design/MBMA2002.pdf](http://www.chiefbuildings.com/design/MBMA2002.pdf)

Phillips Exeter Academy. "Design of the Library" 19 Nov. 2008 [www.exeter.edu/libraries/4513\\_4522.aspx](http://www.exeter.edu/libraries/4513_4522.aspx)

pushpullbar: architecture and design forum. 18 Nov. 2008.

[www.pushpullbar.com/forums/showthread.php?t=2408](http://www.pushpullbar.com/forums/showthread.php?t=2408)

Rykwert, Joseph. Louis Kahn. Harry N. Abrams, Inc.: New York, 2001.

Schodek, Daniel L., and Martin Bechtold. Structures. 6th ed. Upper Saddle River, NJ: Pearson, 2008.

Wiggins, Glenn E. Louis I. Kahn: The Library at Phillips Exeter Academy. CD-ROM. New York: Van Nostrand Reinhold, 1997.