

Copyright © Kirk Martini

concrete construction: shear & deflection

Concrete Shear 1
Lecture 23

Elements of Architectural Structures
ARCH 614

S2009abn

ACI Shear Values

- V_u is at distance d from face of support
- shear capacity: $V_c = v_c \times b_w d$

– where b_w means
thickness of web at n.a.

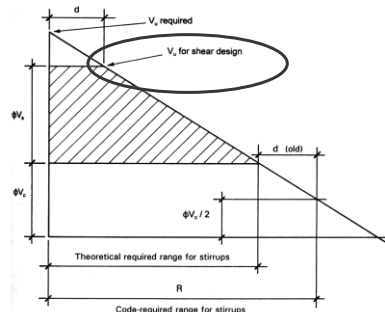


Figure 13.16 Layout for shear stress analysis: ACI Code requirements.

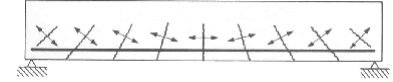
Concrete Shear 3
Lecture 23

Elements of Architectural Structures
ARCH 614

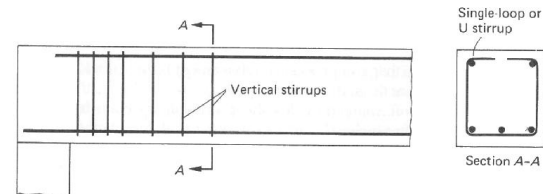
S2007abn

Shear in Concrete Beams

- flexure combines with shear to form diagonal cracks



- horizontal reinforcement doesn't help
- stirrups = vertical reinforcement



Concrete Shear 2
Lecture 23

Elements of Architectural Structures
ARCH 614

S2007abn

ACI Shear Values

- shear stress (beams)
 - $v_c = 2\sqrt{f'_c}$
 - $\phi V_c = \phi 2\sqrt{f'_c} b_w d$

$\phi = 0.75$ for shear
 f'_c is in psi

- shear strength:
 - $V_u \leq \phi V_c + \phi V_s$
 - V_s is strength from stirrup reinforcement

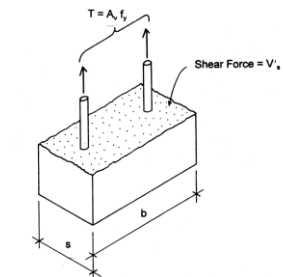


Figure 13.17 Consideration for spacing of a single stirrup.

Concrete Shear 4
Lecture 23

Elements of Architectural Structures
ARCH 614

S2007abn

Stirrup Reinforcement

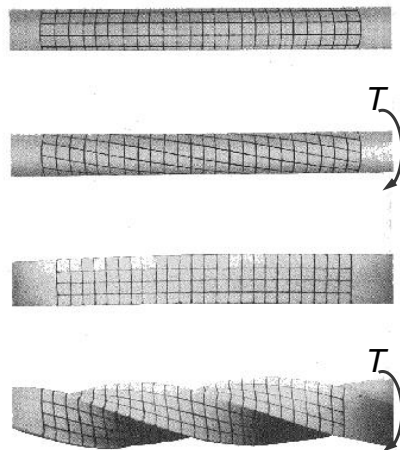
- shear capacity:

$$V_s = \frac{A_v f_y d}{s}$$

- A_v = area in all legs of stirrups
- s = spacing of stirrup
- may need stirrups when concrete has enough strength!

Torsional Stress & Strain

- can see torsional stresses & twisting of axi-symmetrical cross sections
 - torque
 - remain plane
 - undistorted
 - rotates
- not true for square sections....



Required Stirrup Reinforcement

- spacing limits

Table 3-8 ACI Provisions for Shear Design*

		$V_u \leq \frac{\phi V_c}{2}$	$\phi V_c \geq V_u > \frac{\phi V_c}{2}$	$V_u > \phi V_c$
Required area of stirrups, A_v^{**}		none	$\frac{50b_w s}{f_y}$	$\frac{(V_u - \phi V_c)s}{\phi f_y d}$
Stirrup spacing, s	Required	—	$\frac{A_v f_y}{50b_w}$	$\frac{\phi A_v f_y d}{V_u - \phi V_c}$
	Recommended Minimum†	—	—	4 in.
	Maximum‡‡ (ACI 11.5.4)	—	$\frac{d}{2}$ or 24 in.	$\frac{d}{2}$ or 24 in. for $(V_u - \phi V_c) \leq \phi 4\sqrt{f'_c} b_w d$ $\frac{d}{4}$ or 12 in. for $(V_u - \phi V_c) > \phi 4\sqrt{f'_c} b_w d$

*Members subjected to shear and flexure only; $\phi V_c = \phi 2\sqrt{f'_c} b_w d$, $\phi = 0.75$ (ACI 11.3.1.1)

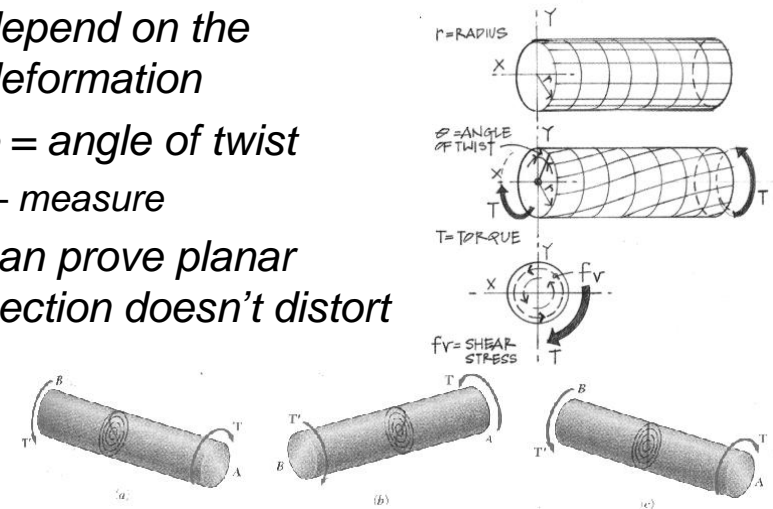
** $A_v = 2 \times A_b$ for U stirrups; $f_y \leq 60$ ksi (ACI 11.5.2)

†A practical limit for minimum spacing is $d/4$

‡‡Maximum spacing based on minimum shear reinforcement ($= A_v f_y / 50b_w$) must also be considered (ACI 11.5.5.3).

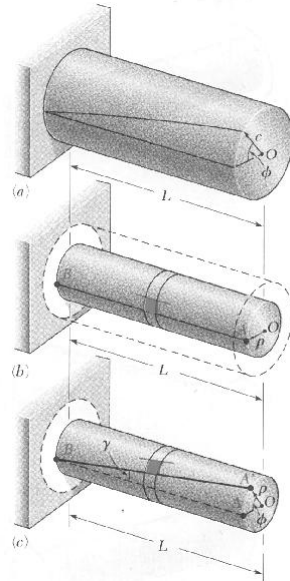
Shear Stress Distribution

- depend on the deformation
- ϕ = angle of twist
 - measure
- can prove planar section doesn't distort



Shearing Strain

- related to ϕ
$$\gamma = \frac{\rho\phi}{L}$$
- ρ is the radial distance from the centroid to the point under strain
- shear strain varies linearly along the radius: γ_{max} is at outer diameter



Concrete Shear 9
Lecture 23

Elements of Architectural Structures
ARCH 614

S2007abn

Torsional Stress - Strain

- know $f_v = \tau = G \cdot \gamma$ and $\gamma = \frac{\rho\phi}{L}$
- so
$$\tau = G \cdot \frac{\rho\phi}{L}$$
- where G is the Shear Modulus

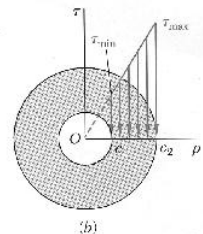
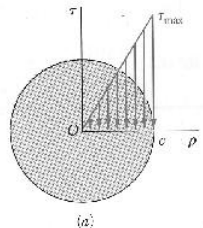
Concrete Shear 10
Lecture 23

Elements of Architectural Structures
ARCH 614

S2007abn

Torsional Stress - Strain

- from
$$T = \sum \tau(\rho) \Delta A$$
- can derive
$$T = \frac{\tau J}{\rho}$$
 - where J is the polar moment of inertia
 - elastic range
$$\tau = \frac{T\rho}{J}$$



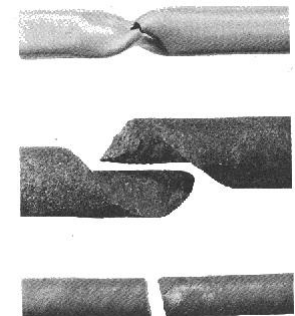
Concrete Shear 11
Lecture 23

Elements of Architectural Structures
ARCH 614

S2007abn

Shear Stress

- τ_{max} happens at outer diameter
- combined shear and axial stresses
 - maximum shear stress at 45° "twisted" plane



Concrete Shear 12
Lecture 23

Elements of Architectural Structures
ARCH 614

S2007abn

Shear Strain

- knowing $\tau = G \cdot \frac{\rho\phi}{L}$ and $\tau = \frac{T\rho}{J}$
- solve: $\phi = \frac{TL}{JG}$
- composite shafts: $\phi = \sum_i \frac{T_i L_i}{J_i G_i}$

Concrete Shear 13
Lecture 23

Elements of Architectural Structures
ARCH 614

S2007abn

Noncircular Shapes

- torsion depends on J
- plane sections don't remain plane
- τ_{max} is still at outer diameter

$$\tau_{max} = \frac{T}{c_1 ab^2} \quad \phi = \frac{TL}{c_2 ab^3 G}$$

– where a is longer side ($> b$)

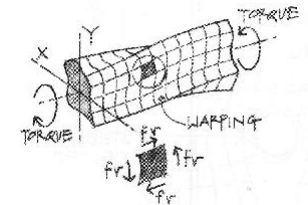


TABLE 3.1. Coefficients for Rectangular Bars in Torsion

a/b	c_1	c_2
1.0	0.208	0.1406
1.2	0.219	0.1661
1.5	0.231	0.1958
2.0	0.246	0.229
2.5	0.258	0.249
3.0	0.267	0.263
4.0	0.282	0.281
5.0	0.291	0.291
10.0	0.312	0.312
∞	0.333	0.333

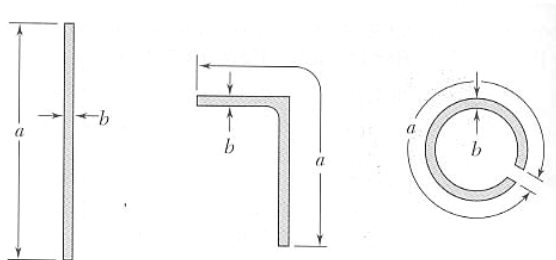
Concrete Shear 14
Lecture 23

Elements of Architectural Structures
ARCH 614

S2007abn

Open Thin-Walled Sections

- with very large a/b ratios:



$$\tau_{max} = \frac{T}{\frac{1}{3} ab^2} \quad \phi = \frac{TL}{\frac{1}{3} ab^3 G}$$

Concrete Shear 15
Lecture 23

Elements of Architectural Structures
ARCH 614

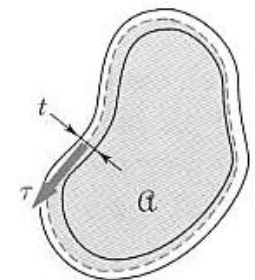
S2007abn

Shear Flow in Closed Sections

- q is the internal shear force/unit length

$$\tau = \frac{T}{2t\mathcal{A}}$$

$$\phi = \frac{TL}{4t\mathcal{A}^2} \sum_i \frac{s_i}{t_i}$$



- \mathcal{A} is the area bounded by the centerline
- s_i is the length segment, t_i is the thickness

Concrete Shear 16
Lecture 23

Elements of Architectural Structures
ARCH 614

S2007abn

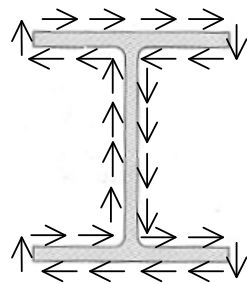
Shear Flow in Open Sections

- each segment has proportion of T with respect to torsional rigidity,

$$\tau_{\max} = \frac{Tt_{\max}}{\frac{1}{3} \sum b_i t_i^3}$$

- total angle of twist:

$$\phi = \frac{TL}{\frac{1}{3} G \sum b_i t_i^3}$$



- I beams - web is thicker, so τ_{\max} is in web

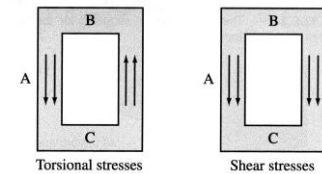
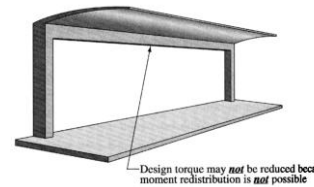
Concrete Shear 17
Lecture 23

Elements of Architectural Structures
ARCH 614

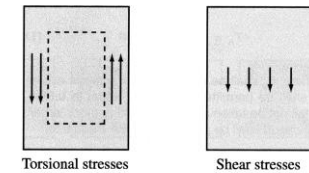
S2007abn

Torsional Shear Stress

- twisting moment
- and beam shear



(a) Hollow section



(b) Solid section

Fig. R11.6.3.1—Addition of torsional and shear stresses

Concrete Shear 18
Lecture 23

Elements of Architectural Structures
ARCH 614

S2007abn

Torsional Shear Reinforcement

- closed stirrups
- more longitudinal reinforcement

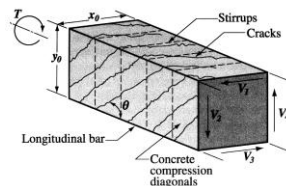
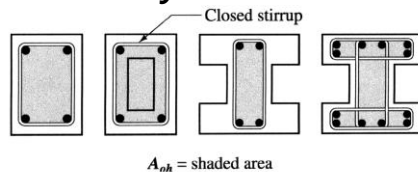


Fig. R11.6.3.6(a)—Space truss analogy

- area enclosed by shear flow



A_{oh} = shaded area

Fig. R11.6.3.6(b)—Definition of A_{oh}

Concrete Shear 19
Lecture 23

Elements of Architectural Structures
ARCH 614

S2007abn

Development Lengths

- required to allow steel to yield (f_y)
- standard hooks
- moment at beam end

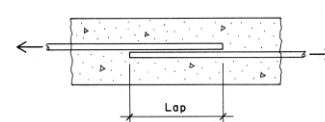
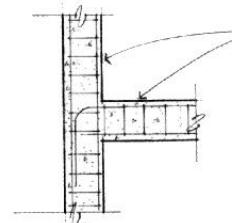
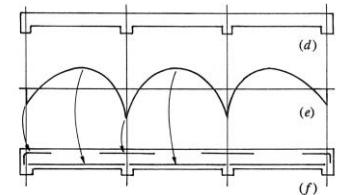


Figure 13.24 The lapped splice for steel reinforcing bars.

- splices
- lapped
- mechanical connectors



Concrete Shear 20
Lecture 23

Elements of Architectural Structures
ARCH 614

S2007abn

Development Lengths

- l_d , embedment required both sides
- proper cover, spacing:

- No. 6 or smaller

$$l_d = \frac{d_b F_y}{25 \sqrt{f'_c}} \quad \text{or 12 in. minimum}$$

- No. 7 or larger

$$l_d = \frac{d_b F_y}{20 \sqrt{f'_c}} \quad \text{or 12 in. minimum}$$

Concrete Shear 21
Lecture 23

Elements of Architectural Structures
ARCH 614

S2009abn

Development Lengths

- bars in compression

$$l_d = \frac{0.02 d_b F_y}{\sqrt{f'_c}} \leq 0.0003 d_b F_y$$

- splices

- tension minimum is function of l_d and splice classification
- compression minimum
- is function of d_b and F_y

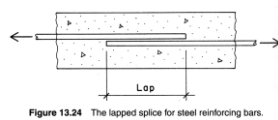


Figure 13.24 The lapped splice for steel reinforcing bars.

Concrete Shear 23
Lecture 23

Elements of Architectural Structures
ARCH 614

S2009abn

Development Lengths

- hooks
 - bend and extension

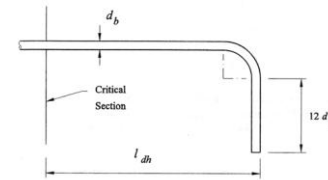


Figure 9-17: Minimum requirements for 90° bar hooks.

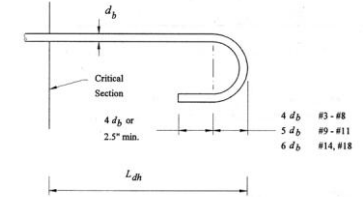


Figure 9-18: Minimum requirements for 180° bar hooks.

- minimum

$$l_{dh} = \frac{1200 d_b}{\sqrt{f'_c}}$$

Concrete Shear 22
Lecture 23

Elements of Architectural Structures
ARCH 614

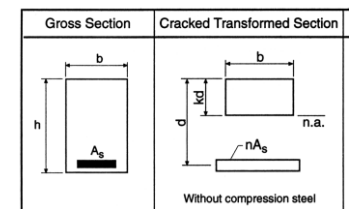
S2009abn

Concrete Deflections

- elastic range

- I transformed
- E_c (with f'_c in psi)
 - normal weight concrete ($\sim 145 \text{ lb/ft}^3$)

$$E_c = 57,000 \sqrt{f'_c}$$
 - concrete between 90 and 160 lb/ft^3



- cracked
 - I cracked
 - E adjusted

Concrete Shear 21
Lecture 23

Elements of Architectural Structures
ARCH 614

S2007abn

Deflection Limits

- relate to whether or not beam supports or is attached to a damageable non-structural element
- need to check service live load and long term deflection against these

<i>L/180</i>	<i>roof systems (typical) – live</i>
<i>L/240</i>	<i>floor systems (typical) – live + long term</i>
<i>L/360</i>	<i>supporting plaster – live</i>
<i>L/480</i>	<i>supporting masonry – live + long term</i>