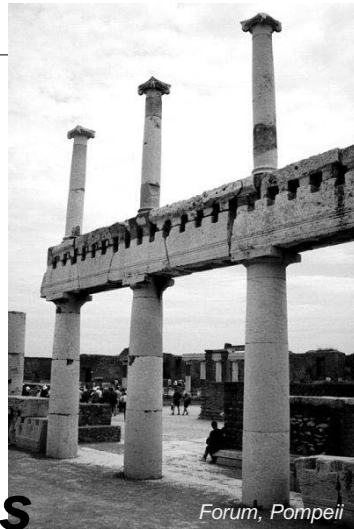


lecture
eight

shear & bending
moment diagrams



Forum, Pompeii

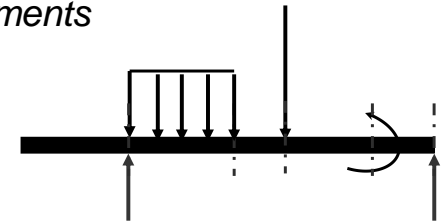
V & M Diagrams 1
Lecture 8

Architectural Structures
ARCH 331

F2009abn

Equilibrium Method

- important places
 - supports
 - concentrated loads
 - start and end of distributed loads
 - concentrated moments
- free ends
 - zero forces



V & M Diagrams 2
Lecture 8

Foundations Structures
ARCH 331

F2008abn

Semigraphical Method

- by knowing
 - area under loading curve = change in V
 - area under shear curve = change in M
 - concentrated forces cause “jump” in V
 - concentrated moments cause “jump” in M

$$V_D - V_C = - \int_{x_C}^{x_D} w dx \quad M_D - M_C = \int_{x_C}^{x_D} V dx$$

V & M Diagrams 3
Lecture 8

Foundations Structures
ARCH 331

F2008abn

Semigraphical Method

- relationships

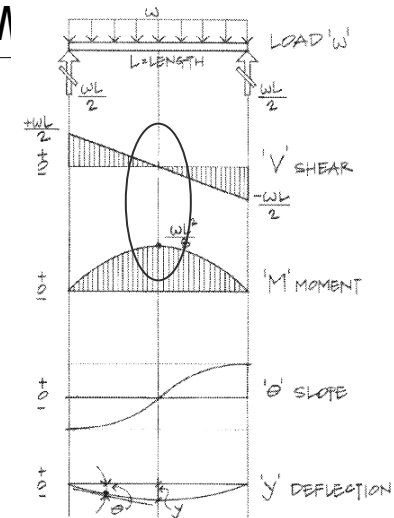


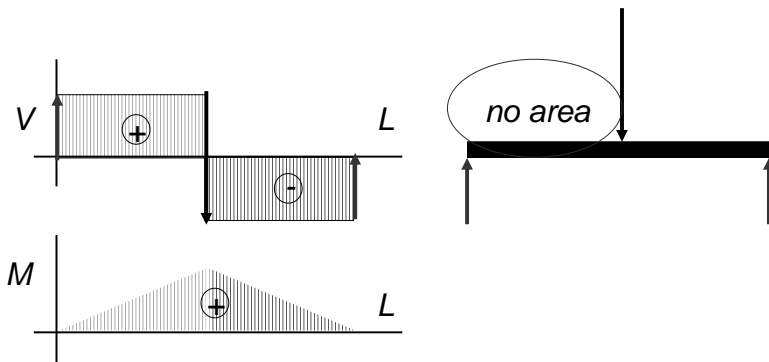
Figure 7.11 Relationship of load, shear, moment, slope, and deflection diagrams.

V & M Diagrams 4
Lecture 8

2008abn

Semigraphical Method

- M_{max} occurs where $V = 0$ (calculus)



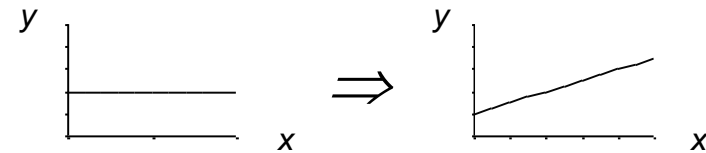
V & M Diagrams 5
Lecture 8

Foundations Structures
ARCH 331

F2008abn

Curve Relationships

- integration of functions
- line with 0 slope, integrates to sloped



- ex: load to shear, shear to moment

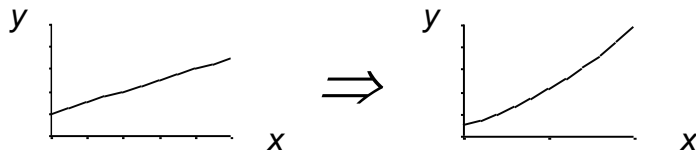
V & M Diagrams 6
Lecture 8

Foundations Structures
ARCH 331

F2008abn

Curve Relationships

- line with slope, integrates to parabola



- ex: load to shear, shear to moment

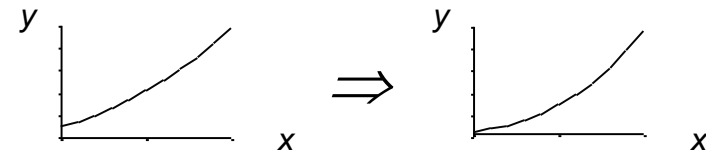
V & M Diagrams 7
Lecture 8

Foundations Structures
ARCH 331

F2008abn

Curve Relationships

- parabola, integrates to 3rd order curve



- ex: load to shear, shear to moment

V & M Diagrams 8
Lecture 8

Foundations Structures
ARCH 331

F2008abn

Basic Procedure

1. Find reaction forces & moments
Plot axes, underneath beam load diagram

V:

2. Starting at left
3. Shear is 0 at free ends
4. Shear jumps with concentrated load
5. Shear changes with area under load

V & M Diagrams 9
Lecture 8

Foundations Structures
ARCH 331

F2008abn

Basic Procedure

M:

6. Starting at left
7. Moment is 0 at free ends
8. Moment jumps with moment
9. Moment changes with area under V
10. Maximum moment is where shear = 0!
(locate where $V = 0$)

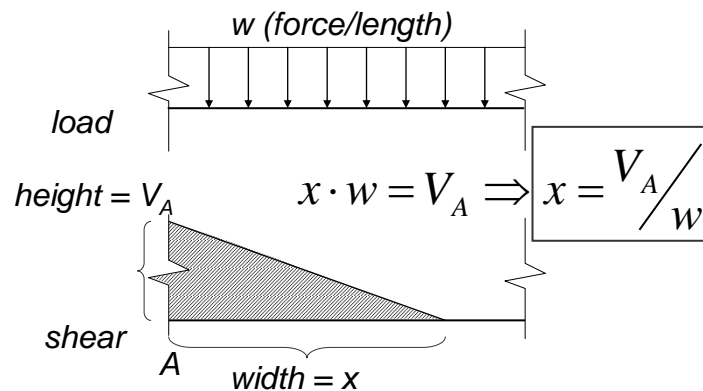
V & M Diagrams 10
Lecture 8

Foundations Structures
ARCH 331

F2008abn

Shear Through Zero

- slope of V is w ($-w:1$)



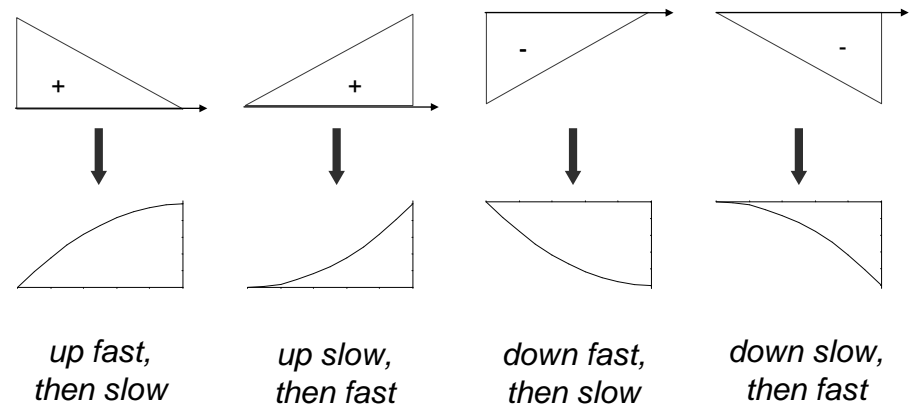
V & M Diagrams 11
Lecture 8

Foundations Structures
ARCH 331

F2008abn

Parabolic Shapes

- cases



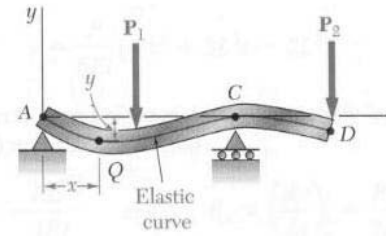
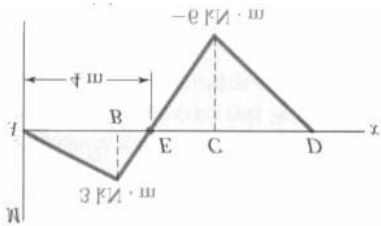
V & M Diagrams 12
Lecture 8

Foundations Structures
ARCH 331

F2008abn

Deflected Shape & M(x)

- $-M(x)$ gives shape indication
- boundary conditions must be met



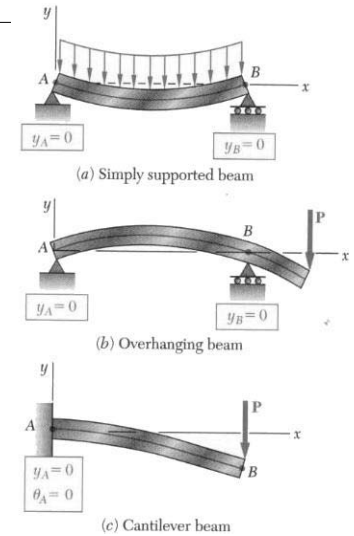
V & M Diagrams 13
Lecture 8

Foundations Structures
ARCH 331

F2008abn

Boundary Conditions

- at pins, rollers, fixed supports: $y = 0$
- at fixed supports: $\theta = 0$
- at inflection points from symmetry: $\theta = 0$
- y_{max} at $\frac{dy}{dx} = 0$



V & M Diagrams 14
Lecture 8

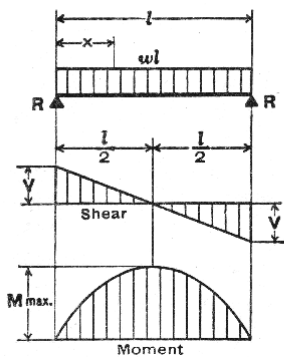
Foundations Structures
ARCH 331

F2008abn

Tabulated Beam Formulas

- how to read charts

1. SIMPLE BEAM—UNIFORMLY DISTRIBUTED LOAD



Total Equiv. Uniform Load	...	=	wl
$R = V$...	=	$\frac{wl}{2}$
V_x	...	=	$w \left(\frac{l}{2} - x \right)$
$M_{max.}$ (at center)	...	=	$\frac{wl^2}{8}$
M_x	...	=	$\frac{wx}{2} (l - x)$
$\Delta_{max.}$ (at center)	...	=	$\frac{5wl^4}{384EI}$
Δ_x	...	=	$\frac{wx}{24EI} (l^3 - 2lx^2 + x^3)$

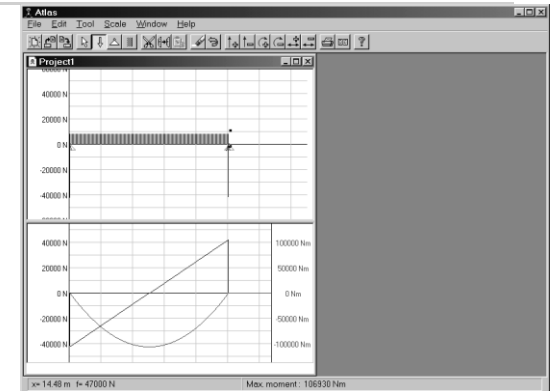
V & M Diagrams 15
Lecture 8

Foundations Structures
ARCH 331

F2008abn

Tools

- software & spreadsheets help
- <http://www.rekenwonder.com/atlas.htm>



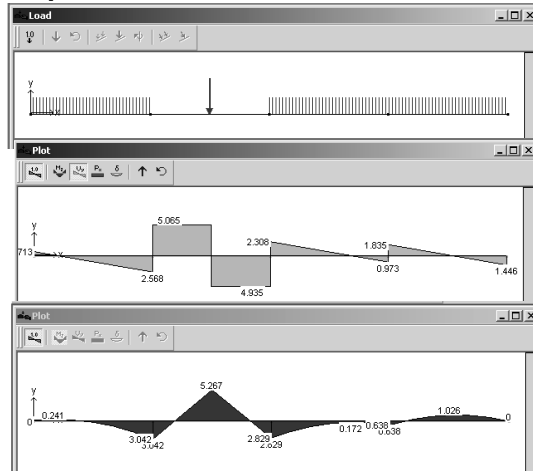
V & M Diagrams 16
Lecture 8

Foundations Structures
ARCH 331

F2008abn

Tools – Multiframe

- in computer lab



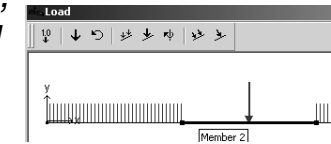
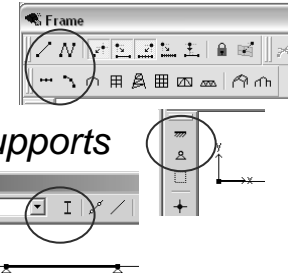
V & M Diagrams 17
Lecture 8

Foundations Structures
ARCH 331

F2008abn

Tools – Multiframe

- frame window
 - define beam members
 - select points, assign supports
 - select members, assign section
- load window
 - select point or member, add point or distributed loads



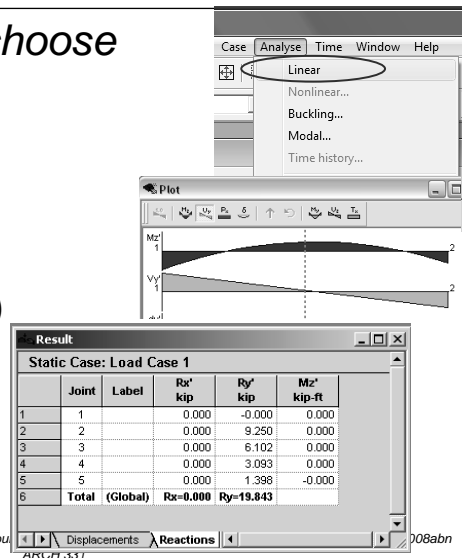
V & M Diagrams 18
Lecture 8

Foundations Structures
ARCH 331

F2008abn

Tools – Multiframe

- to run analysis choose
 - Analyze menu
 - Linear
- plot
 - choose options
 - double click (all)
- results
 - choose options



V & M Diagrams 19
Lecture 8

Fou
ARCH 331
008abn